

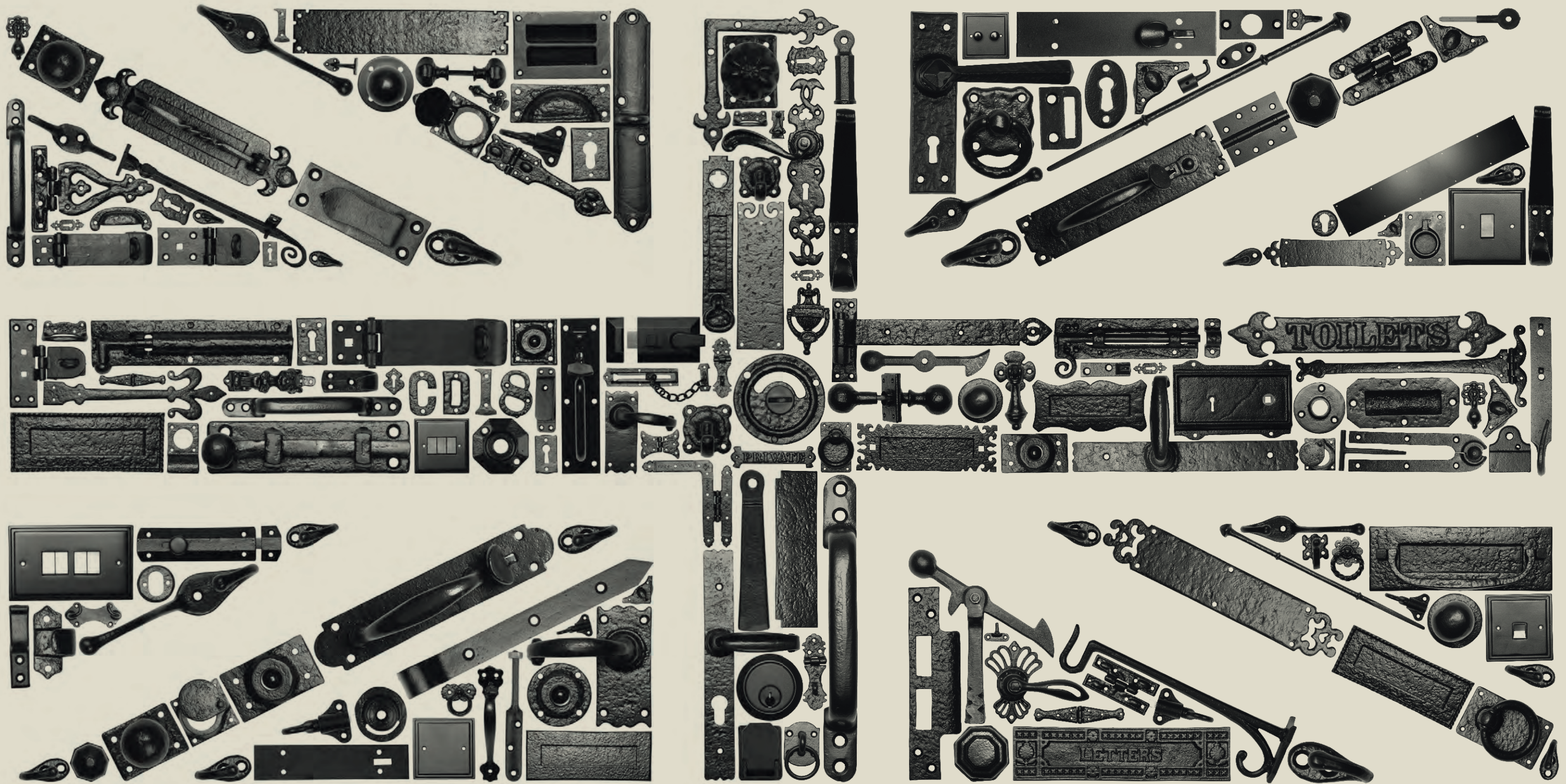


Kirkpatrick.



CONTENTS

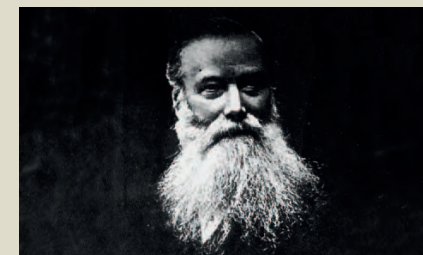
02	Handmade and British	82	BLACKSMITH FORGE RANGE
05	Our history	84	Door furniture
06	Why choose us?	88	Window furniture
08	Ranges and finishes	90	Hooks and handles
10	BLACK IRON RANGE	92	CAST BRASS RANGE
12	Door and gate furniture	93	Door furniture
12	Lever handles	99	Window furniture
18	Hinges and hinge fronts	100	Hooks, handles and locks
24	Thumb and gate latches		
30	Letter plates	102	RAWNSLEY RANGE
33	Bolts and locks		
40	Pull handles	104	INSPIRATION AND WHERE TO BUY
44	Door knobs		
48	Door knockers	106	GLOSSARY
52	Door accessories	108	PRODUCT INDEX
60	Gate fittings		
60	Gate stops and catches		
60	Locking bars/Hasp and staples		
62	Window furniture		
62	Casement fasteners		
67	Casement stays		
72	Cabinet and drawer furniture		
73	Handles		
74	Knobs and pulls		
76	Home accessories		
76	Hooks and brackets		
80	Lighting		
81	Patio and fireside		



HANDMADE AND BRITISH FROM START TO FINISH

We have more than 160 years' experience, crafting beautiful ironwork under the same roof in Walsall where it all began back in 1855.

OUR HISTORY



Our business was founded by William Kirkpatrick, Esq. J. P. (1817–1887) in Walsall in 1855, and carried on for many years in his name and direction.

His son, Vincent Kirkpatrick, succeeded his father and presided over the incorporation of the business as a Limited Company in 1901. Upon incorporation, many loyal and long serving employees were given a shareholding, starting a tradition which continues to this day.

Many of the descendants of those first shareholders still retain their interest in the Company and the Kirkpatrick family still also retain a shareholding.

Adapting to change

While looking back through our large collection of product catalogues dating back to the 19th century, much of our present window and door furniture remains true to our roots and has changed little over the past 160 years.

But we've not stood still – apart from during both World War I and II, when production was interrupted to concentrate on the war effort, we've been constantly evolving to reflect changing tastes, fashions and technology. For example, many of our window fasteners now include secure locking mechanisms and we also supply products to suit modern UPVC windows and doors.

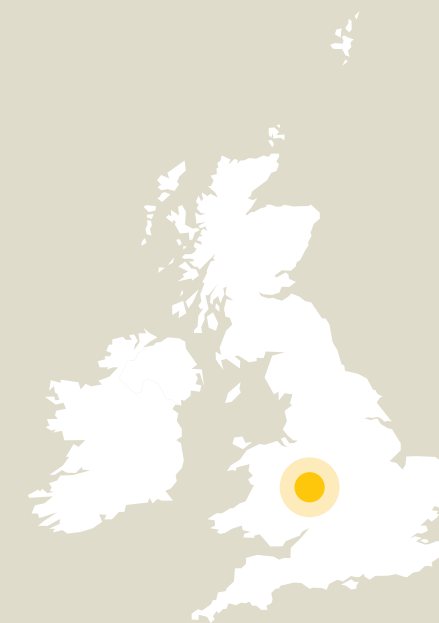


The last UK foundry

In the mid-20th century there were many jobbing foundries in the Midlands and the Black Country, however most have fallen by the wayside owing to increasing international competition from India and the Far East.

As a result, we are immensely proud to be the only manufacturer of traditional black ironmongery left in the UK who genuinely pours their own metal.

Our continued success is due to the world-class quality of our genuinely hand-made products and our ability to adapt and develop our range to suit the needs of an ever changing world.



FROM POURING TO PACKING...

...each stage is performed by our own fair hands — making us the only ironwork company whose products are genuinely handmade in Britain from start to finish.



STAGE 1 PATTERN MAKING

Dave gets the ball rolling by creating the distinctive patterns from which every Kirkpatrick product is born.



STAGE 2 MOULDING

Chris skilfully makes the moulds by pressing the patterns into a special box filled with black sand.



STAGE 3 MELTING

Paul adds pig iron to the induction furnace, which is heated to a melting point of 1,200 °C.



STAGE 4 COLLECTING

Kevin collects the molten iron as it is poured from the tipped furnace into pre-heated pots.



STAGE 5 POURING

Ransford needs a steady hand to evenly pour the molten iron into different moulds.



STAGE 6 COOLING

David removes the heavy weights from moulds (which stop the iron exploding) and it begins to cool.



STAGE 7 REMOVING

Dave moves the moulds and taps off the sand, to reveal the fresh new casting underneath.



STAGE 8 SHOT BLASTING

Stuart puts the castings with metallic shot into a barrelling machine to smooth away rough edges.



STAGE 9 ANNEALING

Mark places the castings into pots which are heated to 1,000 °C – making the iron strong yet malleable.



STAGE 10 SORTING

Martin takes the castings, which have undergone further shot blasting, and separates each into storage boxes.



STAGE 11 GRINDING

David grinds away the rough edges and unwanted seams to give the castings a smarter finish.



STAGE 12 FILING

Bill completes the smoothing and rounding of each individual piece with a quick file down.



STAGE 13 DRILLING

Sandra hand drills individual holes on each casting for accuracy and to give a high quality, durable finish.



STAGE 14 ASSEMBLING

Dave assembles a range of our products by attaching, hammering and expertly screwing them together.



STAGE 15 DIPPING

Michael makes sure the castings never rust by hanging and dipping each one in protective paint.



STAGE 16 COATING

Dean sprays our products with a powder coating for a great finish, before baking them again for extra durability.



STAGE 17 PACKING

Tracy makes sure every product is packed with the same care and attention that goes into making them.



STAGE 18 SENDING

Mark works hard to ensure every customer receives their Kirkpatrick products in good time.



STAGE 19 ENJOYING

It takes over six weeks to create every Kirkpatrick product, each providing a lifetime of enjoyment.



WHY CHOOSE US?

We believe our 160-year tradition for producing handmade ironmongery, utilising the skills of our local workforce, gives Kirkpatrick products a style, authenticity and longevity that cannot be matched by less expensive, poor quality imitations.

It is a combination of our experience, expertise and dedication to producing ironwork of the utmost character which means that you will not find better quality or value anywhere else in the world.

Our heritage

Much of our black iron door and window furniture is based on patterns (designs) used by our foundry since its inception in the 19th century. Our workforce today uses essentially the same finishing and assembly techniques as back then, which have been handed down and refined through generations.

It's this history which helps us create durable and beautiful ironwork products that have an integrity and authenticity which is second to none.

Our craft

Each and every piece of our ironmongery is lovingly crafted by hand over a six week period, ensuring each door handle and window latch is unique and lovingly created to provide strength and quality which will last a lifetime.

Added to this, we react quickly and efficiently to our customer's needs, and are able to produce new fittings that perfectly match the style and character of old buildings.

Our promise

We keep most of our products in stock and aim to deliver within 48 hours. So if you're trying to find a match for existing traditional ironwork or perhaps want to fit out a stylish new barn conversion, we're sure to have what you need.

We can supply everything from door and window furniture to coat hooks and shelf brackets, but if you can't find what you are looking for please get in touch as we are also able to create bespoke, one-off pieces to suit your exact needs.

Our authenticity

We use malleable iron, because it is stronger and more durable than imported alternatives. This authenticity, coupled with the high quality of our products has made us recognised leaders in our field.

We're proud to be the only traditional ironmongery manufacturer able to use the Made in Britain logo. Why buy a traditional British product steeped in history from India or China?

Our guarantee

We are proud of our heritage and the quality of our malleable iron products. Crafted to the highest standards using traditional manufacturing processes we are confident that you cannot buy a better quality product.

Care instructions are included in each product and by adopting this simple advice you can help ensure that Kirkpatrick Ironmongery will remain highly decorative and will last a lifetime.

Our green creds

Although we are a traditional company, we're always looking for ways to improve our efficiency and therefore our environmental impact – so we've invested in reducing our energy consumption which has helped us save 250 tonnes of carbon each year since we upgraded our processes.

Our factory emissions are minimal and regularly tested to ensure we comply with the Environmental Protection Act and as a result – our carbon footprint is lower than many of our competitors who use foundries in unregulated countries and whose products have been imported into the UK.

RANGES



BLACK IRON

Our Black Iron range is the largest available anywhere in the world. Pieces range from traditional to contemporary in style in an Antique or Smooth Black Iron finish, with other finishes available on certain products. *(See page 10)*



CAST BRASS

Our Cast Brass range is modelled from select pieces from our Black Iron range, which are made entirely from brass so the manufacturing process used differs from our black iron pieces. The component parts are highly polished before assembly and then have a tough lacquer applied to protect the product. *(See page 92)*



BLACKSMITH FORGE

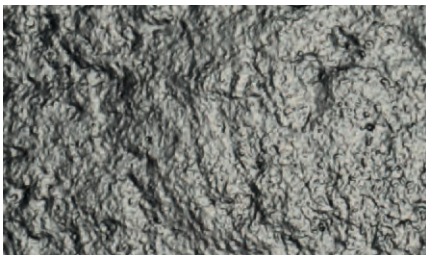
Our stylish new Blacksmith Forge range has been inspired by the iconic Gothic architecture of the late medieval period. It includes both door and window furniture, plus other fittings, and comes in a flat matt black or Argent finish to suit both traditional and contemporary-styled homes. *(See page 82)*



RAWNSLEY

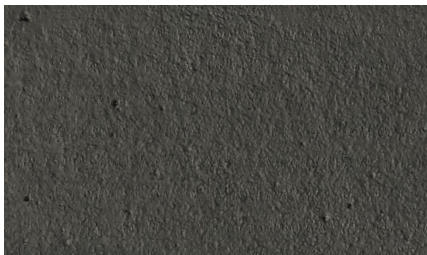
The Rawnsley range is based on ornate patterns rescued from a foundry on Cannock Chase which closed in the early 1980s. Some of the patterns are also to be found in old Kirkpatrick catalogues. The Rawnsley range is available in Black, Pewter and Argent finishes. *(See page 102)*

FINISHES



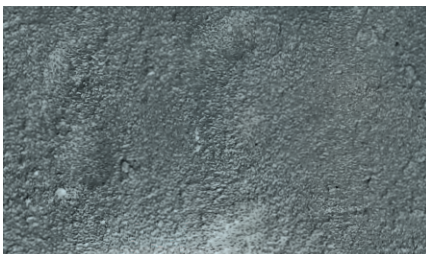
AB ANTIQUE BLACK

A stippled and slightly glossy black iron finish gives our products a unique texture. This is achieved by using antique style castings and the application of our tough powder coat protection. Products which have moving parts are also subjected to a prior coat of paint for additional protection.



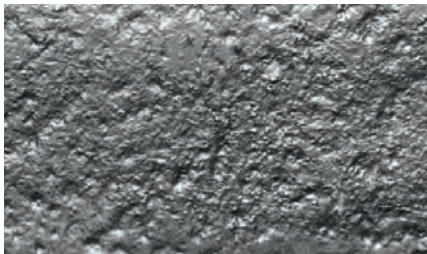
SB SMOOTH BLACK

A smooth matt textured, black iron finish. Although many products look similar to those with an Antique Black finish these differ because we use a smooth style pattern. The same paint and powder process as Antique Black is generally used.



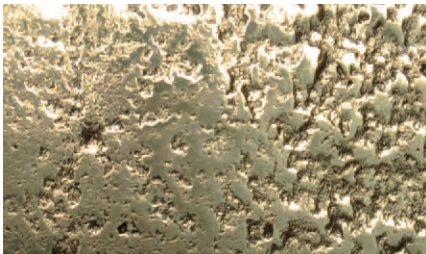
A ARGENT

Argent has a slight stippled ‘naked’ silver metal finish which creates subtle highlights in differing lights. It differs from Pewter in that it is a bare metal finish with a coat of clear lacquer applied for protection.



P PEWTER

Our Pewter finish is achieved by using a different colour final coating to give a long lasting Pewter effect. This finish is available on all products.



B BRASS

Our original and authentic patterns are used to produce our Cast Brass range, and after casting the components are polished and then assembled by hand, finally finished with a tough lacquer to offer protection against corrosion.

BLACK IRON RANGE

- 12 Door and gate furniture
- 60 Gate fittings
- 62 Window furniture
- 72 Cabinet and drawer furniture
- 76 Home accessories

The traditional handcrafted nature of our production process means that all listed sizes are approximate.



Door hinges 978 and door handle 2451 in Antique Black

DOOR AND GATE FURNITURE

LEVER HANDLES



- 754

Lock, latch, bathroom, Euro & oval
228 x 50mm (9" x 2")
- 2445

Lock, latch, bathroom, Euro & oval
152 x 38mm (6" x 1 1/2")
- 2450

Lock, latch, bathroom, Euro & oval
190 x 57mm (7 1/2" x 2 1/4")
- 1563

Lock, latch, bathroom, Euro & oval
247 x 50mm (9 3/4" x 2")
- 2440

Lock, latch, bathroom, Euro & oval
152 x 38mm (6" x 1 1/2")
- 2433

Latch only – 139 x 47mm (5 1/2" x 1 7/8")
- 2434

Lock or latch – 184 x 57mm (7 1/4" x 2 1/4")
Short latch – 143 x 57mm (5 5/8" x 2 1/4")
- 2439

Lock or latch – 152 x 38mm (6" x 1 1/2")
Short latch – 101 x 38mm (4" x 1 1/2")
- 879

Latch only – 50mm (2")

See glossary (p106) to identify which handle type you require. All products are spring loaded except where indicated.



Lever door handle 2449
in Antique Black

DOOR AND GATE FURNITURE
LEVER HANDLES



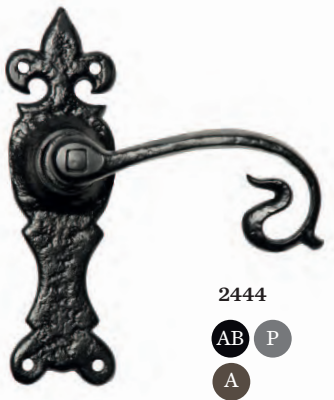
2448

AB P
A



2442

AB P
A



2444

AB P
A



2496

AB P
A



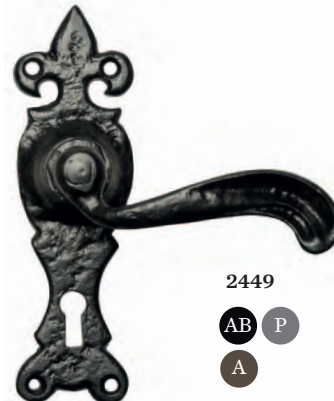
2564

SB P
A



2491

AB P
A



2449

AB P
A



2451

AB P
A B



2454

AB P
A B



2495

AB P
A



2494

AB P
A



2563

SB P
A B



2520

AB P
A



2488

AB P
A



2519

SB P
A



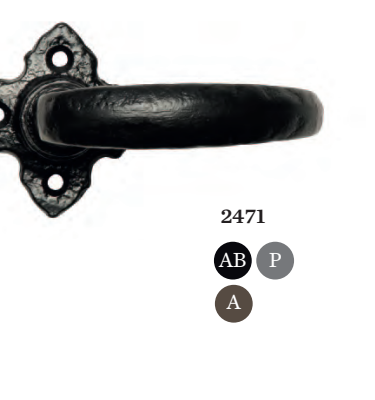
2568

SB P
A



2456

SB P
A



2471

AB P
A

2448

Lock, latch & bathroom
159 x 50mm (6 1/4" x 2")

2449

Lock, latch, bathroom, Euro & oval
165 x 50mm (6 1/2" x 2")

2520

Latch only – 108 x 50mm (4 1/4" x 2")

2442

Lock, latch & bathroom
159 x 50mm (6 1/4" x 2")

2451

Lock, latch, bathroom, Euro & oval
164 x 47mm (6 1/2" x 1 7/8")

2488

Lock, latch, bathroom, Euro & oval
127 x 50mm (5" x 2")

2444

Lock, latch & bathroom
165 x 50mm (6 1/2" x 2")

2454

Lock, latch, bathroom, Euro & oval
164 x 47mm (6 1/2" x 1 7/8")

2519

Lock, latch & bathroom
127 x 50mm (5" x 2")

2496

Lock, latch, bathroom, Euro & oval
177 x 38mm (7" x 1 1/2")

2495

Lock, latch & bathroom
184 x 50mm (6 1/2" x 2")

2568

Lock, latch & bathroom
152 x 38mm (6" x 1 1/2")

See glossary (p106) to identify which handle type
you require. All products are spring loaded except
where indicated.

2564

Lock – 140 x 55mm (5 1/2" x 2 1/2")
Latch – 114 x 55mm (4 1/2" x 2 1/2")

2494

Lock, latch & bathroom
152 x 50mm (6" x 2")

2456

Lock, latch, bathroom, Euro & oval
152 x 38mm (6" x 1 1/2")

2491

Lock, latch, bathroom, Euro & oval
197 x 45mm (7 3/4" x 1 3/4")

2563

Lock – 140 x 38mm (5 1/2" x 1 1/2")
Latch – 114 x 38mm (4 1/2" x 1 1/2")

2471

Latch only – 50 x 50mm (2" x 2")



Lever door handle 2451
in Antique Black

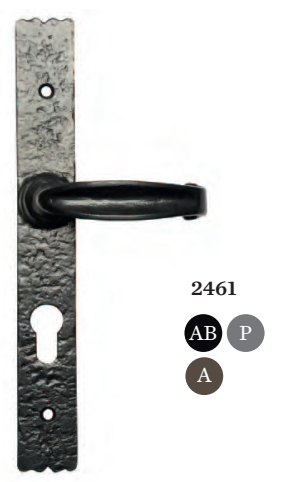
DOOR AND GATE FURNITURE LEVER HANDLES



2459
AB P
A



2460
AB P
A



2461
AB P
A



2463
AB P
A



2462
AB P
A



6054
AB P
A



Cylinder 6000

2459
Lock, bathroom, Euro & oval
266 x 38mm (10 1/2" x 1 1/2")
72mm & 92mm standard centres
Not spring loaded

2463
Lock or latch – 267 x 38mm (10 1/2" x 1 1/2")

Cylinder 6000
Black double cylinder or thumb turn and single cylinder. Keyed alike, keyed to differ or master keyed. Odd sizes available in multiples of 5mm. Please ask for details.

2460
Lock, bathroom, Euro & oval
266 x 38mm (10 1/2" x 1 1/2")
72mm & 92mm standard centres
Not spring loaded

2462
Lock, bathroom, Euro & oval
273 x 44mm (10 3/4" x 1 3/4")
72mm & 92mm standard centres
Not spring loaded

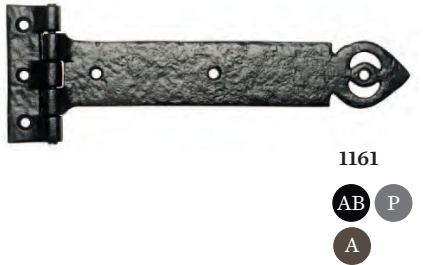
2461
Lock, bathroom, Euro & oval
266 x 38mm (10 1/2" x 1 1/2")
72mm & 92mm standard centres
Not spring loaded

6054
Lock, latch or Euro – 266 x 38mm
72mm & 92mm standard centres
(10 1/2" x 1 1/2")
Not spring loaded

See glossary (p106) to identify which handle type you require

Door hinge front 814F in Antique Black
and door hinge 814 in Argent

DOOR AND GATE FURNITURE
HINGES



799
228 x 101mm (9" x 4")
304 x 140mm (12" x 5 1/2")
400 x 146mm (15 3/4" x 5 3/4")
457 x 152mm (18" x 6")
533 x 152mm (21" x 6")
609 x 160mm (24" x 6 1/4")

3679
228 x 108mm (9" x 4 1/4")
266 x 108mm (10 1/2" x 4 1/4")
304 x 108mm (12" x 4 1/4")
381 x 108mm (15" x 4 1/4")
457 x 108mm (18" x 4 1/4")

622
419 x 171mm (16 1/2" x 6 3/4")

810
304 x 133mm (12" x 5 1/4")
406 x 133mm (16" x 5 1/4")
482 x 133mm (19" x 5 1/4")
660 x 133mm (26" x 5 1/4")

814
152 x 63mm (6" x 2 1/2")
263 x 101mm (10 1/2" x 4")
313 x 101mm (12" x 4")
388 x 101mm (15" x 4")
456 x 101mm (18" x 4")
513 x 101mm (21" x 4")

621
508 x 209mm (20" x 8 1/4")

1161
304 x 101mm (12" x 4")
381 x 101mm (15" x 4")
457 x 101mm (18" x 4")

1814
Lift off hinge
Strap – 283mm (11")
Plate – 88 x 28mm (3 1/2" x 1")

1820
406 x 108mm (16" x 4 1/4")
457 x 120mm (18" x 4 3/4")
508 x 120mm (20" x 4 3/4")

DOOR AND GATE FURNITURE
HINGES



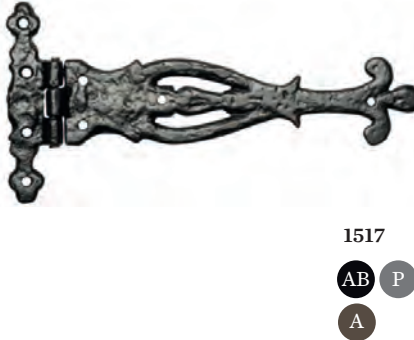
1159
AB P
A



809
AB P
A



645
AB P
A



1517
AB P
A



1513
AB P
A



816
AB P
A



1512
AB P
A



1510
AB P
A



1172
AB P
A



1509
AB P
A



1120
AB P
A



1507
AB P
A



1508
AB P
A



619
AB P
A



620
AB P
A



1558
AB P
A



829
AB P
A



5141/5148
SB P
A

1159 304 x 114mm (12" x 4 1/2")	809 660 x 133mm (26" x 5 1/4")	645 457 x 101mm (18" x 4") 609 x 101mm (24" x 4")
1517 216 x 114mm (9" x 4 1/2")	1513 194 x 80mm (7 1/2" x 3 1/4")	816 203 x 95mm (8" x 4")
1512 207 x 95mm (8" x 3 3/4")	1510 133 x 94mm (5 1/4" x 3 3/4")	1172 156 x 88mm (6" x 3 1/2") 232 x 114mm (9" x 4 1/2") 304 x 114mm (12" x 4 1/2")

1509 Suitable for cabinet doors 111 x 51mm (4 1/2" x 2")	1120 Suitable for cabinet doors 89 x 41mm (3 1/2" x 1 5/8")	1507 Suitable for cabinet doors 80 x 42mm (3 1/4" x 1 5/8")
1508 Suitable for cabinet doors 95 x 45mm (3 1/4" x 1 3/4")	619 171 x 63mm (6 3/4" x 2 1/2")	620 177 x 63mm (7" x 2 1/2")
1558 Suitable for cabinet doors 101 x 35mm (4" x 1 3/8")	829 Suitable for cabinet doors 90 x 69mm (3 1/2" x 2 5/8")	5141/5148 (5141) Steel butt hinge – 102mm (4") (5148) Steel butt hinge – 76mm (3")

DOOR AND GATE FURNITURE

HINGES AND HINGE FRONTS



925

AB P

A



927

AB P

A



926

AB P

A B



798

AB P

A B



797

AB P

A



977

AB P

A



1511

AB P

A



978

AB P

A



820

AB P

A



821

AB P

A



817

AB P

A



819

AB P

A



641

AB P

A



814F

AB P

A

925
Suitable for cabinet doors
51 x 38mm (2 1/8" x 1 3/4")
70 x 50mm (2 3/4" x 2")

1511
139 x 114mm (5 1/2" x 4 1/2")

819
Hinge front
304 x 129mm (12" x 5 3/4")
381 x 146mm (15" x 5 3/4")
457 x 146mm (18" x 5 3/4")
533 x 146mm (21" x 5 3/4")

927
Suitable for cabinet doors
130 x 73mm (5" x 2 7/8")

978
Hinge front
101 x 89mm (4" x 3 1/2")

641
Hinge front
345 x 90mm (13 3/4" x 3 1/2")

926
Suitable for cabinet doors
83 x 45mm (3 1/4" x 1 3/4")

820
Hinge front
152 x 41mm (6" x 1 5/8")
304 x 63mm (12" x 2 1/2")
406 x 120mm (16" x 4 3/4")
457 x 120mm (18" x 4 3/4")

814F
Hinge front
304mm (12"), 381mm (15")
457mm (18"), 533mm (21")

798
Hinge front
304 x 139mm (12" x 5 1/2")
392 x 145mm (15 1/2" x 5 3/4")
457 x 152mm (18" x 6")
533 x 152mm (21" x 6")

821
Hinge front
203 x 73mm (8" x 1 7/8")
304 x 89mm (12" x 3 1/2")
457 x 139mm (18" x 5 1/2")

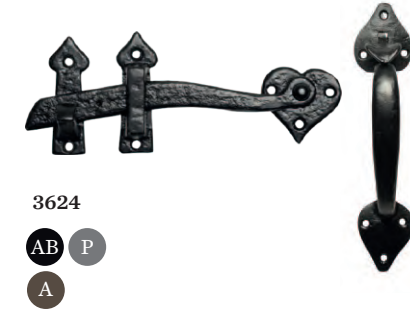
797
Hinge front
381 x 82mm (15" x 3 1/4")
457 x 89mm (18" x 3 1/2")

817
Hinge front
406 x 165mm (16" x 6 1/2")
406 x 159mm (16" x 6 1/4")
508 x 216mm (20" x 8 1/2")

977
Hinge front
247 x 54mm (9 3/4" x 2 1/8")

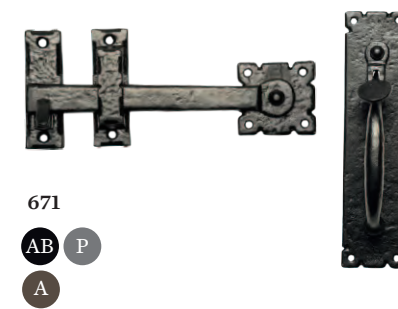
DOOR AND GATE FURNITURE

THUMB LATCHES



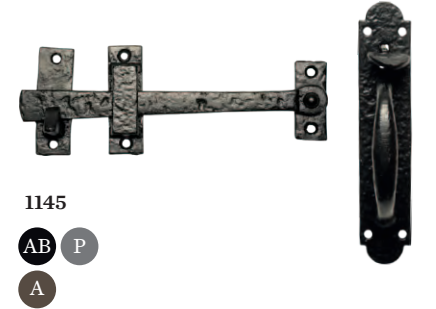
3624

AB P
A



671

AB P
A



1145

AB P
A



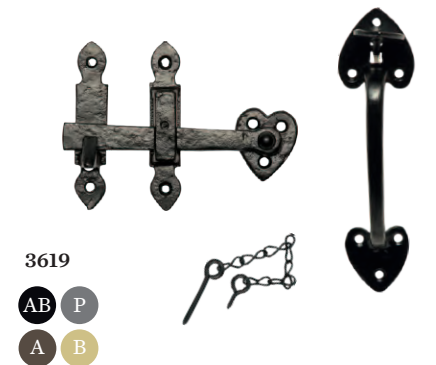
3618

AB P
A



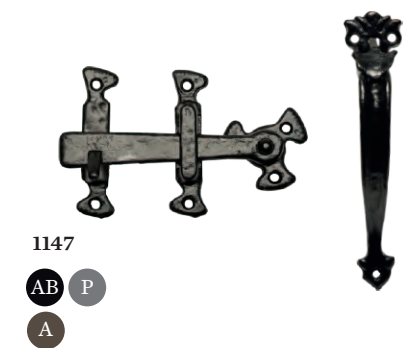
688

AB P
A



3619

AB P
A B



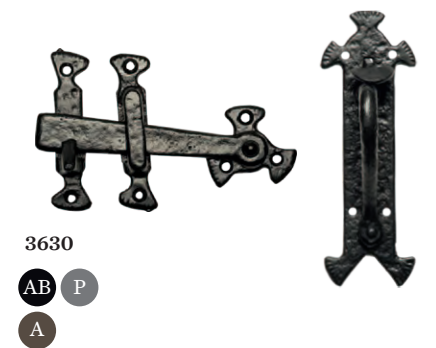
1147

AB P
A



1124

AB P
A



3630

AB P
A

3624
Handle – 203mm (8")
Latch – 216mm (8 1/2")
Handle – 235mm (9 1/4")
Latch – 216mm (8 1/2")
Available in left and right hand versions

3618
Handle – 228 x 63mm (9" x 2 1/2")
Latch – 197mm (7 3/4")

1147
Handle – 197mm (7 3/4")
Latch – 152mm (6")

671
Handle – 254 x 63mm (10" x 2 1/2")
Latch – 228mm (9")
Available in left and right hand versions

688
Handle – 254 x 50mm (10" x 2")
Latch – 177mm (7")

1124
Side fixing catch
Handle – 190 x 50mm (7 1/2" x 2")
Latch – 101mm (4")

1145
Handle – 177 x 38mm (7" x 1 1/2")
Latch – 216mm (8 1/2")

3619
Handle – 203 x 63mm (8" x 2 1/2")
Latch – 127mm (5")

3630
Handle – 190 x 63mm (7 1/2" x 2 1/2")
Latch – 152mm (6")

DOOR AND GATE FURNITURE

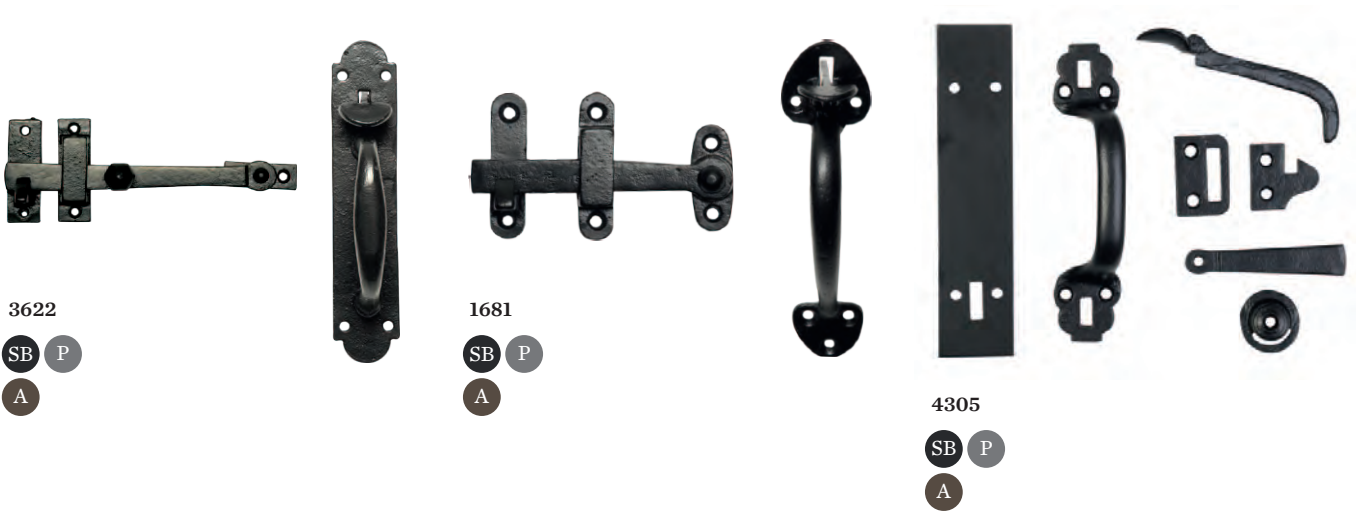
THUMB LATCHES



- 3623**
Handle – 203mm (8”)
Latch – 152mm (6”)
3628
Handle – 260 x 73mm (10 1/4” x 2 7/8”)
Latch – 247mm (9 3/4”)
3620
Cupboard latch – 127mm (5”)
- 907**
Cranked handle – 190mm (7 1/2”)
Latch – 139mm (5 1/2”)
Available in left and right hand versions
3613
Handle – 152mm (6”)
Latch – 114mm (4 1/2”)
3614
Cupboard latch – 114mm (4.5”)
- 3625**
Bow handles each side of door
Handle – 241mm (9 1/2”)
Latch – 203mm (8”)
4320
Plate – 247 x 59mm (9 3/4” x 2 1/4”)
Latch – 228mm (9”)
Inside of handle – 108mm (4 1/4”)
1684
Plate – 216 x 44mm (8 1/2” x 1 3/4”)
Latch – 241mm (9 1/2”)
Inside of handle – 89mm (3 1/2”)



Reverse of latch set 3619 in Argent



- 3622**
Plate – 191 x 35mm (7 1/2” x 1 3/8”)
Latch – 203mm (8”)
Inside of handle – 89mm (3 1/2”)
1681
Cranked or straight. Cranked has locking wedge. Available in left and right hand versions. Handle – 191mm (7 1/2”)
Latch – 127mm (5”)
- 4305**
Plate – 197 x 46mm (7 3/4” x 1 3/4”)
Inside of handle – 89mm (3 1/2”)

See glossary (p106) to understand the difference between straight and cranked

DOOR AND GATE FURNITURE

GATE LATCHES



717

AB P

A



632

AB P

A



911

AB P

A



679

AB P

A



491

SB P

A



3431

SB P

A



3981

SB P

A



1248

AB P

A



1251

AB P

A



1249

AB P

A



3979

SB P

A



1146

AB P

A



1246

AB P

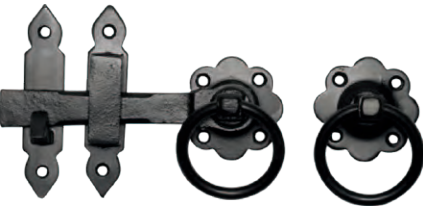
A



4438

SB P

A



3258

SB P

A



869

AB P

A



866

AB P

A



4088

SB P

A



867

SB P

A

717
Plate – 127 x 76mm (5" x 3")
Handle diameter – 89mm (3 1/2")

679
Handle – 76mm (3")
Rose – 63mm (2 1/2")

3981
Ring – 76mm (3")
Plate – 76mm (3")

632
Handle – 101mm (4")
Rose diameter – 101mm (4")

491
Plate – 108mm (4 1/4")
Ring – 76mm (3")

1248
Latch – 203mm (8") or 254mm (10")

911
Handle – 76mm (3")
Rose – 50mm (2")

3431
Ring – 76mm (3")
Plate – 76mm (3")

1251
Latch – 127mm (5") or 177mm (7")

1249
Latch – 152mm (6")*, 177mm (7")*,
203mm (8"), 254mm (10")
*Supplied with 1146 catch & staple

1246
Latch – 152mm (6") or 197mm (7 3/4")

869
Latch – 203mm (8")

3979
Latch – 127mm (5"), 152mm (6"), 177mm (7")

4438
Latch – 152mm (6")

866
Latch – 177mm (7") or 203mm (8")

4088
Latch – 152mm (6")

1146
Latch – 127mm (5")

3258
Latch – 127mm (5"), 152mm (6"), 177mm (7")

867
Latch – 152mm (6")



Lever door handle 2449
and letter plate 1073
both in Antique Black

DOOR AND GATE FURNITURE
LETTER PLATES



1073

- AB P
- A B



1085

- AB P
- A



1324

- AB P
- A



962

- AB P
- A



1911

- SB P
- A



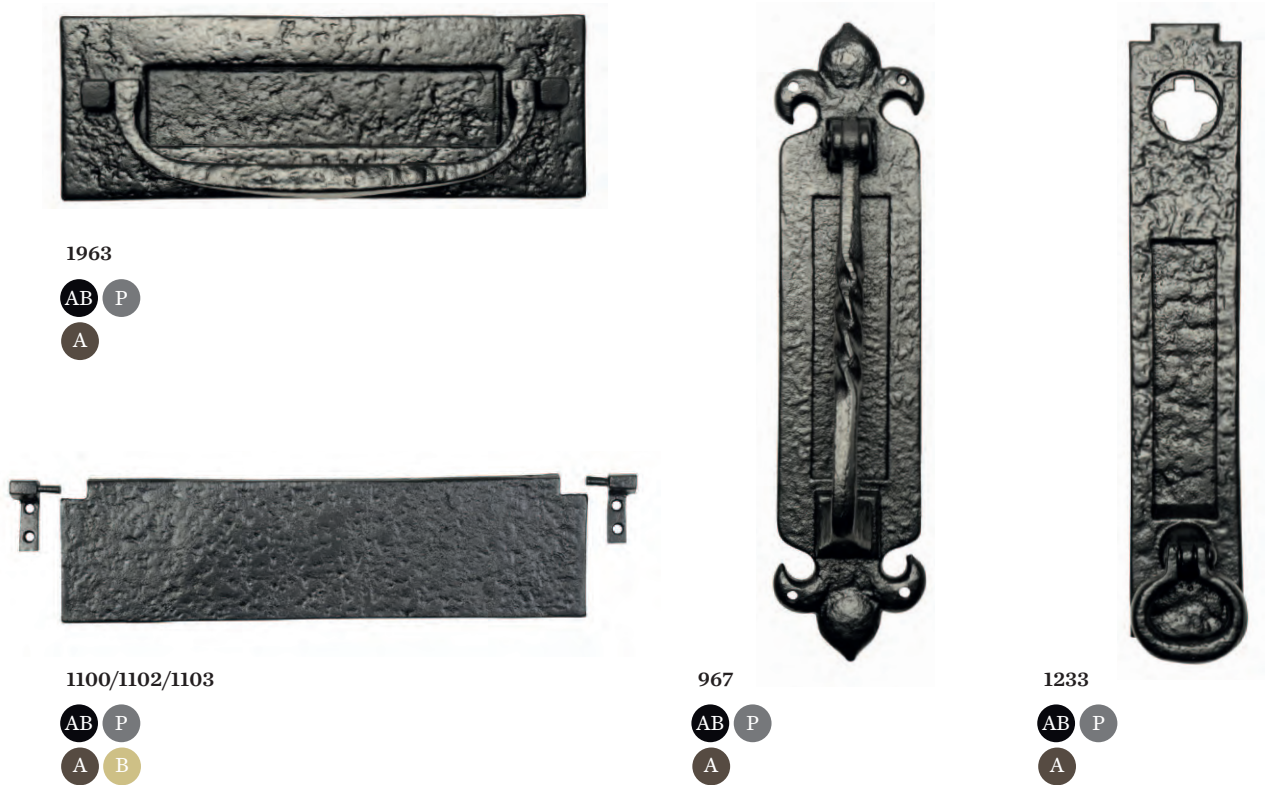
1083

- AB P
- A B

	Outside	Opening	Fixing bolt centres
1073			
Size 1	304 x 82mm (12" x 3")	144 x 38mm (6" x 1 1/2")	222mm (8 1/2")
Size 2	362 x 88mm (14 1/4" x 3 1/2")	203 x 44mm (8" x 1 3/4")	277mm (10 3/4")
Size 3	419 x 76mm (16 1/2" x 3")	260 x 33mm (10 1/4" x 1 5/16")	345mm (13 1/2")
1324			
Size 1	228 x 76mm (9" x 3")	155 x 41mm (6 1/8" x 1 5/8")	191mm (7 1/2")
Size 2	267 x 101mm (10 1/2" x 4")	203 x 45mm (8" x 1 3/4")	235mm (9 1/4")
1911			
Size 1	267 x 114mm (10 1/2" x 4 1/2")	203 x 41mm (8" x 1 5/8")	235mm (9 1/4")

	Outside	Opening	Fixing bolt centres
1085			
Size 1	304 x 101mm (12" x 4")	139 x 38mm (5 1/2" x 1 1/2")	222mm (8 3/4")
Size 2	362 x 104mm (14 1/4" x 4 1/8")	203 x 44mm (8" x 1 3/4")	279mm (11")
962			
Size 1	228 x 101mm (9" x 4")	163 x 41mm (6 3/4" x 1 5/8")	203mm (8")
1083			
Size 1	266 x 76mm (8" x 3")	139 x 35mm (5 1/2" x 1 1/3")	171mm (6 3/4")
Size 2	266 x 108mm (10 1/2" x 4 1/2")	203 x 44mm (8" x 1 3/4")	241mm (9 1/4")
Size 3	340 x 102mm (13 3/4" x 4")	238 x 50mm (9 3/4" x 1/8")	296mm (11 1/2")
Size 4	352 x 127mm (13 3/4" x 5")	275 x 62mm (11 x 2 1/2")	313mm (12 1/2")

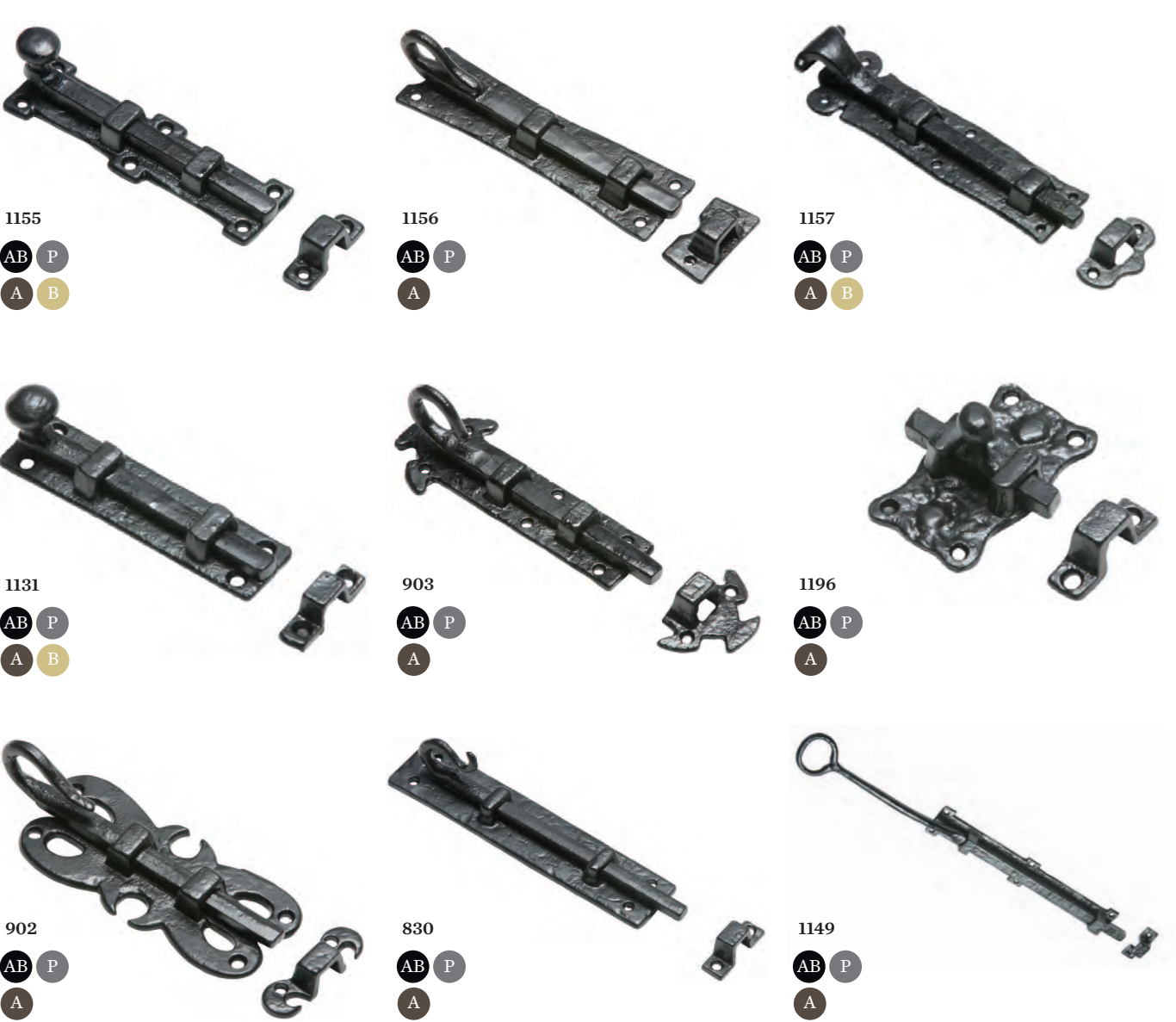
DOOR AND GATE FURNITURE
LETTER PLATES



1963	<i>Outside</i> 295 x 108mm (11 5/8" x 4 1/4")	<i>Opening</i> 203 x 44mm (8" x 1 3/4")	<i>Fixing bolt centres</i> 254mm (10")
1100	Internal flap – 241 x 71mm (9 1/2" x 3")		
1102	Internal flap – 292 x 76mm (11 1/2" x 3")		
1103	Internal flap – 355 x 101mm (14" x 4")		

967	<i>Outside</i> 317 x 76mm (13" x 3")	<i>Opening</i> 139 x 38mm (5 1/2" x 1 1/2")
1233	<i>Outside</i> 311 x 57mm (12 1/4" x 2 1/4")	<i>Opening</i> 133 x 28mm (5 1/4" x 1 1/8")

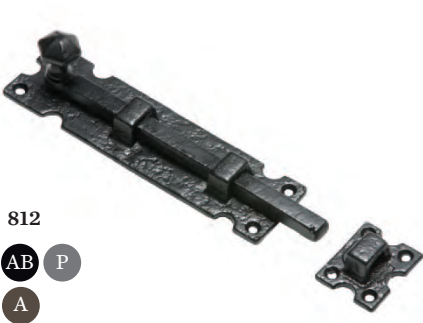
DOOR AND GATE FURNITURE
BOLTS AND LOCKS



1155 Straight or cranked Plate – 152 x 45mm (6" x 1 3/4") or 203 x 54mm (8" x 2 1/8") Straight only Plate – 254 x 54mm (10" x 2 1/8") or 304 x 54mm (12" x 2 1/8") 1131 Straight or cranked Plate – 101 x 25mm (4" x 1") 902 Straight only Plate – 127 x 50mm (5" x 2") Bolt – 152mm (6")	1156 Straight or cranked Plate – 152 x 45mm (6" x 1 3/4") or 203 x 45mm (8" x 1 3/4") 903 Straight only Plate – 152 x 63mm (6" x 2 1/2") Bolt – 152mm (6") Plate – 222 x 89mm (8 3/4" x 3 1/2") Bolt – 228mm (9") 830 Straight or cranked Bolt – 101mm (4") or 152mm (6")	1157 Straight or cranked Plate – 114 x 38mm (4 1/2" x 1 1/2") Bolt – 127mm (5") Plate – 190 x 57mm (7 1/2" x 2 1/4") Bolt – 203mm (8") Straight only Plate – 241 x 57mm (9 1/2" x 2 1/4") Bolt – 254mm (10") Plate – 292 x 57mm (11 1/2" x 2 1/4") Bolt – 304mm (12") 1196 63 x 35mm (2 1/2" x 1 3/8") 1149 Plate – 304 x 50mm (12" x 2") Bolt – 555mm (22")
---	--	--

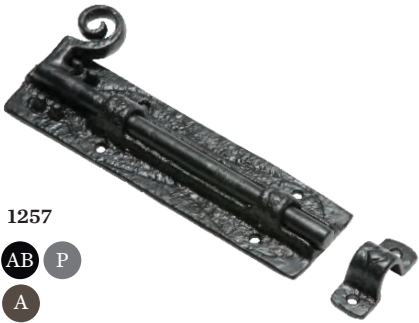
See glossary (p106) to understand the
difference between straight and cranked

DOOR AND GATE FURNITURE
BOLTS AND LOCKS



812

AB P
A



1257

AB P
A



1154

AB P
A



1546

AB P
A



1547

AB P
A



4090

SB P
A



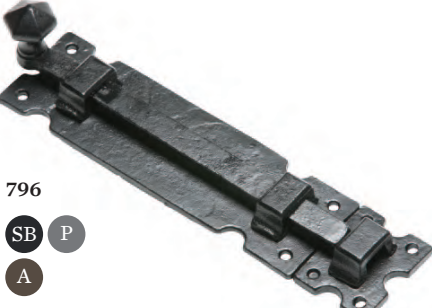
5170

SB P
A



4321

SB P
A



796

SB P
A

812
Straight or cranked
Plate – 193 x 50mm (7 5/8" x 2")
Bolt – 203mm (8")

Straight only
Plate – 228 x 54mm (9" x 2 1/8")
Bolt – 254mm (10")
Plate – 279 x 57mm (11" x 2 1/4")
Bolt – 304mm (12")

1546
Straight only
Plate – 101mm (4")

5170
Straight only
Bolt – 152 x 45mm (6" x 1 3/4")

1257
Straight only
Plate – 190 x 57mm (7 1/2" x 2 1/4")
Bolt – 203mm (8")

Straight only
Plate – 241 x 57mm (9 1/2" x 2 1/4")
Bolt – 254mm (10")
Plate – 292 x 57mm (11 1/2" x 2 1/4")
Bolt – 304mm (12")

1547
Cranked only
Plate – 101mm (4")

4321
Straight or cranked
152 x 45mm (6" x 1 3/4")

1154
Straight only
Plate 101 x 38mm (4" x 1 1/2")
or 152 x 38mm (6" x 1 1/2")

4090
Straight only. Plate width for all – 50mm (2")
305 x 16mm (12" x 5/8"), 381 x 16mm
(15" x 5/8"), 457 x 16mm (18" x 5/8"),
533 x 16mm (21" x 5/8"), 610 x 16mm
(24" x 5/8"), 762 x 19mm (30" x 3/4"),
915 x 19mm (36" x 3/4"), 1,220 x 19mm
(48" x 3/4")

796
Straight only
Plate width for all – 57mm (2 1/4")
203mm (8"), 254mm (10"), 305mm (12")
381mm (15"), 457mm (18"), 533mm (21")
610mm (24"), 686mm (27"), 762mm (30")
915mm (36")

See glossary (p106) to understand the
difference between straight and cranked



Bolt 1155 in Antique Black

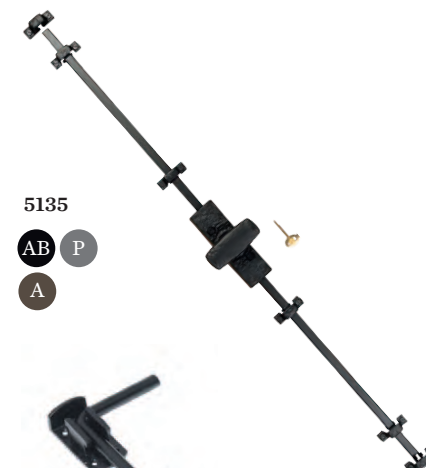
DOOR AND GATE FURNITURE BOLTS AND LOCKS



1158
AB P
A



2967
AB P
A



5135
AB P
A



2968
AB P
A



1150
AB P
A B



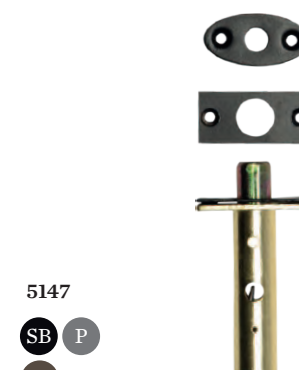
4091
AB P
A



S520
AB P
A



1204
AB P
A



5147
SB P
A

1158
Flush bolt – 152 x 25mm (6" x 1")
or 203 x 25mm (8" x 1")

2968
152mm (6")

S520
Rim lock – 152 x 102mm (6" x 4")

2967
123 x 76mm (4 3/4" x 3")

1150
Privacy bolt with vacant/engaged sign
Latch – 64 x 25mm (2 1/2" x 1")
Catch – 64 x 20mm (2 1/2" x 3/4")
Disc – 70 x 70mm (2 3/4" x 2 3/4")

1204
Lock, latch or deadlock. Supplied with 1550
knob, oval escutcheon and Wilkes spindle.
Lock body – 125 x 103 x 19mm
(4 3/4" x 4" x 3/4")

5135
Espagnolette bolt – 2.4m (8ft)
Also available in 3.05m (10ft) on request
Secures the door both top and bottom.

4091
Drop bolt – 457 x 101mm (18" x 4")
Diameter of handle 15mm (5/8")
Guides 86 x 45mm (3 3/8" x 1 3/4") &
66 x 45mm (2 1/2" x 1 3/4")

5147
Door rack bolt

Door chain 2968 in Antique Black
and Night latch 5144 in Smooth Black

DOOR AND GATE FURNITURE
BOLTS AND LOCKS



5144
SB



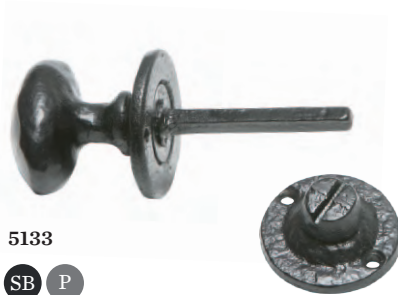
5143
SB



5142
SB



5132
SB P
A



5133
SB P
A



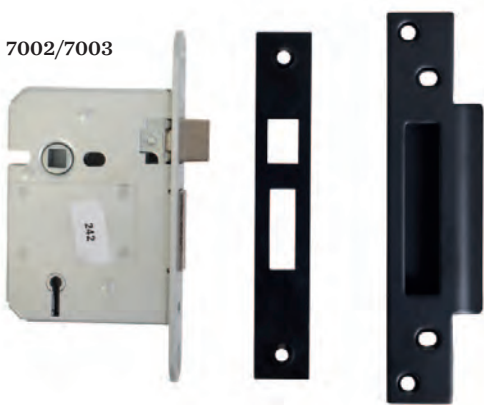
7006/7007



7005



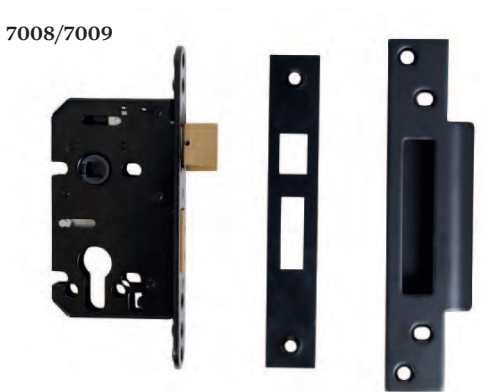
7000/7001



7002/7003



7004



7008/7009



7011/7012



7013/7014



- 5144**
Standard night latch – 60mm (2 3/8")

5132
Star spindle knob (Chubb) – 33mm (1 3/10")

7006/7007
(7006) Tubular latch – 64mm (2 1/2")
(7007) Tubular latch – 76mm (3")
- 5143**
Narrow night latch – 40mm (1 1/2")

5133
Bathroom turn and release – 33mm (1 3/10")
Suitable dead bolt available (5140)
- 5142**
Rim cylinder and keys – 33mm (1 1/4")

7005
Deadlock rebate kit

- 7000/7001**
(7000) Deadlock with escutcheons – 64mm (2 1/2")
(7001) Deadlock with escutcheons – 76mm (3")

7004
Sash rebate kit

7011/7012
(7011) Bathroom lock – 64mm (2 1/2")
(7012) Bathroom lock – 76mm (3")
- 7002/7003**
(7002) Sashlock – 64mm (2 1/2")
(7003) Sashlock – 76mm (3")

7008/7009
(7008) Euro sashlock – 64mm (2 1/2")
(7009) Euro sashlock – 76mm (3")

7013/7014
(7013) Euro deadlock – 64mm (2 1/2")
(7014) Euro deadlock – 76mm (3")

DOOR AND GATE FURNITURE

PULL HANDLES



2157
AB P
A



2155
AB P
A



2173
AB P
A



2167
AB P
A



2164
AB P
A



807
AB P
A



2172
AB P
A



3603
AB P
A B

2157
304 x 63mm (12" x 2 1/2")
Inside grip - 152mm (6")

2164
Straight handle
381 x 50mm (15" x 2")

2155
343 x 73mm (13 1/2" x 2 7/8")
Inside grip - 152mm (6")

807
152 x 44mm (6" x 1 3/4")
266 x 57mm (10 1/2" x 2 1/4")

2173
444 x 76mm (17 1/2" x 3")
Inside grip - 190mm (7 1/2")

2172
266 x 44mm (10 1/2" x 1 3/4")

2167
386 x 50mm (15 1/4" x 2")

3603
191 x 64mm (7 1/2" x 2 1/2")

DOOR AND GATE FURNITURE

PULL HANDLES



564
101mm (4”), 127mm (5”),
152mm (6”), 177mm (7”),
228mm (9”)

1578
215 x 63mm (8 1/2” x 2 1/2”)

937
127mm (5”)

3652
254mm (10”)

1579
152mm (6”)

3651
203mm (8”) or 254mm (10”)

1125
146mm (5 3/4”)

2788
Inside grip – 76mm (3”)
or 101mm (4”)



2105
114mm (4 1/2”)

1883
Inside grip – 76mm (3”),
89mm (3 1/2”), 101mm (4”),
127mm (5”), 152mm (6”)

4013
152mm (6”), 190mm (7 1/2”),
254mm (10”)



DOOR AND GATE FURNITURE
DOOR KNOBS



808
AB P
A



1069
AB P
A



1089
AB P
A



1205
AB P
A B



1206
AB P
A



1207
AB P
A



1550
AB P
A B



1551
AB P
A B



3067
AB P
A

808
Mortice or rim
Knob – 50mm (2")
Plate – 63mm (2 1/2")

1205
Mortice or rim
Knob – 50mm (2")
Plate – 85mm (3 3/8")

1550
Mortice or rim
Knob – 63 x 39mm (2 1/2" x 1 1/2")
Plate – 57mm (2 1/4")

1069
Mortice or rim
Knob – 44mm (1 3/4")
Plate – 67 x 50mm (2 5/8" x 2")

1206
Mortice or rim
Knob – 50mm (2")
Plate – 60mm (2 3/8")

1551
Mortice or rim
Knob – 63 x 38mm (2 1/2" x 1 1/2")
Plate – 67 x 50mm (2 5/8" x 2")

1089
Mortice or rim
Knob – 60 x 38mm (2 3/8" x 1 1/2")
Plate – 67 x 50mm (2 5/8" x 2")

1207
Mortice or rim
Knob – 50mm (2")
Plate – 85mm (3 3/8")

3067
Mortice or rim
Knob – 44mm (1 3/4")
Plate – 60mm (2 1/4")

See glossary (p106) to understand the
difference between mortice and rim

Push plate 769 and door knob 1550 in Argent

DOOR AND GATE FURNITURE

DOOR KNOBS



- 3056**
Mortice or rim
Knob – 57mm (2 1/4")
Plate – 63mm (2 1/2")
Knob – 70mm (2 3/4")
Plate – 76mm (3")

4085
Mortice or rim
Knob – 41mm (1 5/8")
Plate – 64mm (2 1/2")

3370
Centre door knob
Knob – 73mm (2 7/8")
Plate – 76mm (3")
- 3064**
Centre door knob
Knob – 70mm (2 3/4")
Plate – 76mm (3")

4064
Mortice or rim
Knob – 64 x 38mm (2 1/2" x 1 1/2")
Round plate – 64mm (2 1/2")

3072
Centre door knob
Knob – 82mm (3 1/4")
Plate – 171 x 120mm (6 3/4" x 4 3/4")
- 1203**
Mortice or rim
Knob – 50mm (2")
Plate – 67 x 50mm (2 5/8" x 2")

3372
Centre door knob
Knob – 82mm (3 1/4")
Plate – 171 x 120mm (6 3/4" x 4 3/4")

3066
Centre door knob
Knob – 82mm (3 1/4")
Plate diameter – 101mm (4")



- 1554**
Mortice or rim (Mortice shown)
Knob – 44mm (1 3/4")
Plate – 66 x 50mm (2 5/8" x 2")

1553
Mortice or rim (Mortice shown)
Knob – 60 x 38mm (2 3/8" x 1 1/2")
Plate – 66 x 50mm (2 5/8" x 2")
- C387**
Mortice or rim (Mortice shown)
Ball – 44mm (1 3/4")

3075
Mortice or rim (Rim shown)
Square design with smooth finish
Knob – 64 x 38mm (2 1/2" x 1 1/2")
Plate – 64 x 64mm (2 1/2" x 2 1/2")
Escutcheon – 38mm (1 1/2")

DOOR AND GATE FURNITURE
DOOR KNOCKERS

578

AB P
A



896

AB P
A



4896

AB P
A B



1239

AB P
A



574

AB P
A



1117

AB P
A



586

AB P
A



782

AB P
A



846

AB P
A



578

197 x 114mm (7 3/4" x 4 1/2")

1239

Hand – 165 x 70mm (6 1/2" x 2 3/4")

586

140 x 101mm (5 1/2" x 4")

Lion head – 123 x 76mm (4 3/4" x 3")
Ring – 101mm (4")

574

Fox – 127 x 127mm (5" x 5")

782

Ring – 101mm (4")
Plate – 50mm (2")

4896

Lion head – 114 x 95mm (4 1/2" x 3 3/4")
Ring – 101mm (4")

1117

Plate – 101 x 50mm (4" x 2")

846

Ring – 127mm (5")
Plate – 69mm (2 3/4")

Lion head door knocker 4896 in Brass

DOOR AND GATE FURNITURE
DOOR KNOCKERS



- 1197**
Plate – 228 x 120mm (9" x 4 3/4")

1005
203 x 70mm (8" x 2 3/4")

2623
Owl bedroom door knocker
101 x 38mm (4" x 1 1/2")
- 571**
German 16th century 'Dolphin' pattern
203 x 50mm (8" x 2")

944
Plate – 190 x 83mm (7 1/2" x 3 1/4")

2618
Laughing cat bedroom door knocker
108 x 31mm (4 1/4" x 1 1/4")

2629
Bedroom door knocker
127 x 50mm (5" x 2")
- 832**
242 x 57mm (9 1/2" x 2 1/4")

2621
Bat bedroom door knocker
76 x 89mm (3" x 3 1/2")

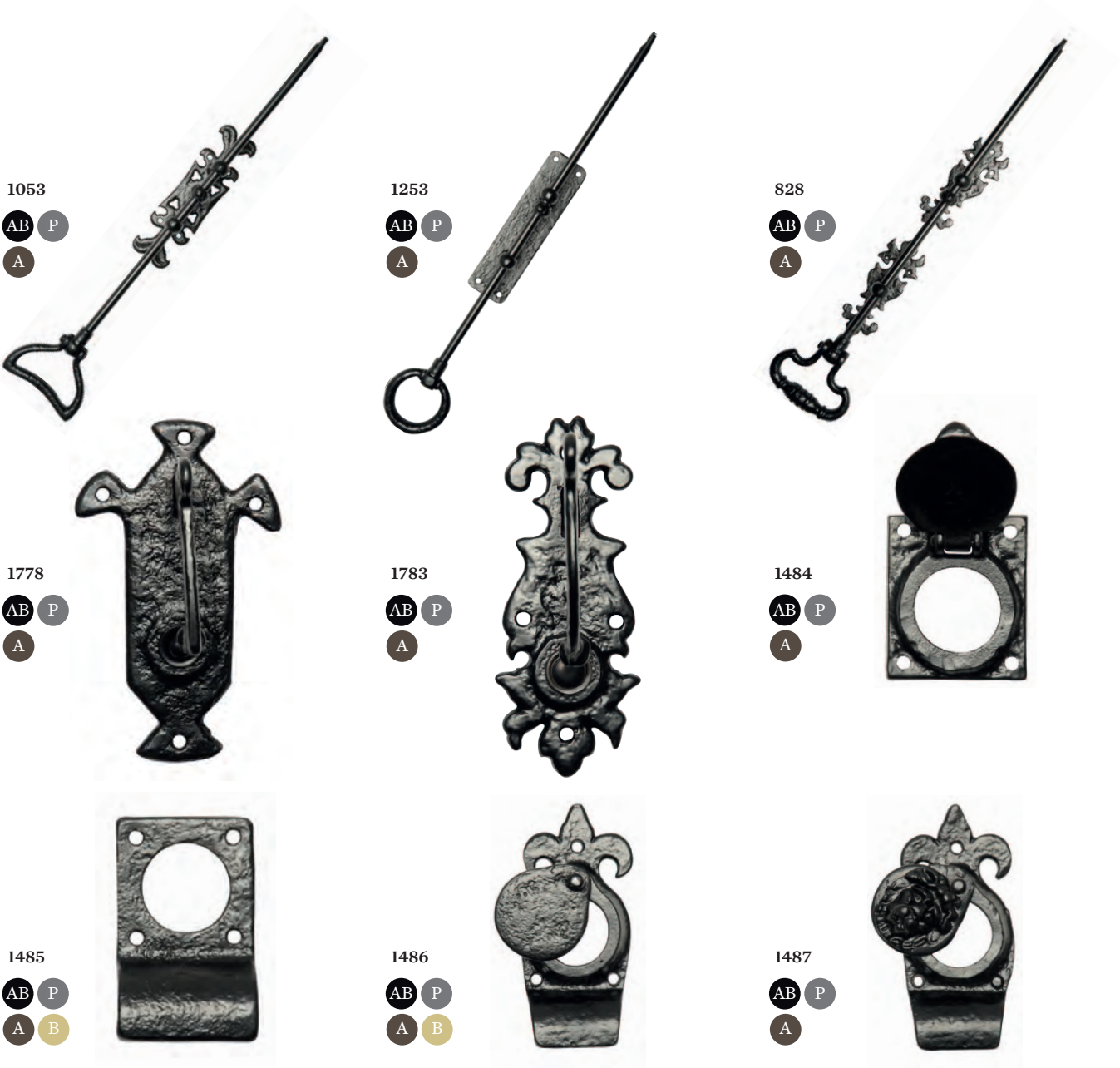
2630
Lion bedroom door knocker
133 x 79mm (5 1/4" x 3 1/8")





House numerals 1979, cylinder latch cover 1486 and mortice door knob fixed as a centre door knob 1550, all in Antique Black

DOOR AND GATE FURNITURE DOOR ACCESSORIES



1053
Bell pull – 521mm (20 1/2")
Suitable for use with bell crank

1778
Bell crank – 152 x 89mm (6" x 3 1/2")
Available fitted for use with electric bell or not fitted for traditional bell

1485
Cylinder latch pull
85 x 50mm (3 1/2" x 2")

1253
Bell pull – 508mm (20")
Suitable for use with bell crank

1783
Bell crank – 139 x 50mm (5 1/2" x 2")
Available fitted for use with electric bell or not fitted for traditional bell

1486
Cylinder latch cover/pull
127 x 58mm (5" x 2 1/2")

828
Bell pull – 521mm (20 1/2")
Suitable for use with bell crank

1484
Cylinder latch cover
65 x 58mm (2 1/2" x 2 1/4")

1487
Cylinder latch cover/pull
127 x 58mm (5" x 2 1/2")

DOOR AND GATE FURNITURE
DOOR ACCESSORIES



853
AB P
A



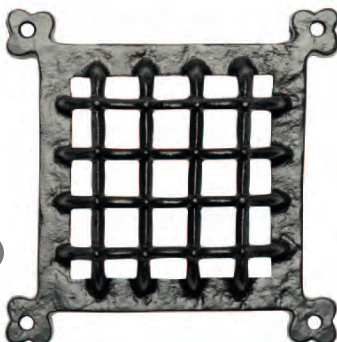
1498
AB P
A



1488
AB P
A



2175
AB P
A



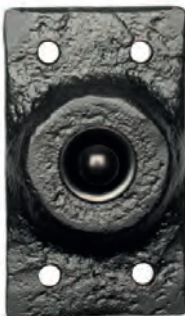
2176
AB P
A



1190
AB P
A



1756
AB P
A



4748
AB P
A



1753
AB P
A



1081
AB P
A B



153
AB P
A B



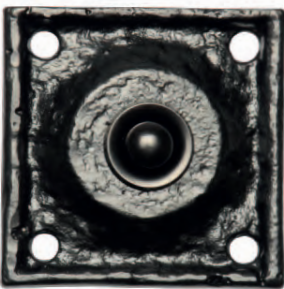
1502
AB P
A B



1761
AB P
A B



751
AB P
A



1759
AB P
A



1490
AB P
A



1503
AB P
A



1065
AB P
A B

853
Cylinder latch knocker
197 x 57mm (7 3/4" x 2 1/4")
1756
Bell push – 85 x 85mm (3 1/4" x 3 1/4")
Supplied with electrical contacts
1761
Bell push – 121 x 32mm (4 3/4" x 1 1/4")
Supplied with electrical contacts

1498
Cylinder latch cover
58 x 58mm (2 5/16" x 2 5/16")
4748
Bell push – 77 x 44mm (3" x 1 3/4")
Supplied with electrical contacts
751
Bell push – 57 x 57mm (2 1/4" x 2 1/4")
Supplied with electrical contacts

1488
Euro cylinder latch pull
Backplate – 85 x 50mm (3 3/8" x 2")
Projection – 20mm (3/4")
To be used with a Euro profile cylinder
1753
Bell push – 89 x 44mm (3 1/2" x 1 3/4")
Supplied with electrical contacts
1759
Bell push – 60 x 60mm (2 3/8" x 2 3/8")
Supplied with electrical contacts

2175
Square door grille – 171 x 171mm (6 3/4")
1081
Door stud. Drive or screw
Head – 16mm (5/8"), 19mm (3/4"),
22mm (7/8"), 25mm (1")
1490
Escutcheon – 44 x 30mm (1 3/4" x 1 1/8")

2176
Square door grille
165 x 165mm (6 1/2") or 304 x 304mm (12")
153
Door stud. Screw
Head – 22mm (7/8")
1503
Escutcheon – 48 x 35mm (1 7/8" x 1 3/8")

1190
Escutcheon – 48 x 25mm (1 7/8" x 1")
1502
Escutcheon – 45 x 30mm (1 3/4" x 1 1/8")
1065
Escutcheon – 54 x 25mm (2 1/8" x 1")

DOOR AND GATE FURNITURE

DOOR ACCESSORIES



1504

AB P

A



3012

SB P

A



1493

AB P

A B



3011

AB P

A



1401

AB P

A B



1400

AB P

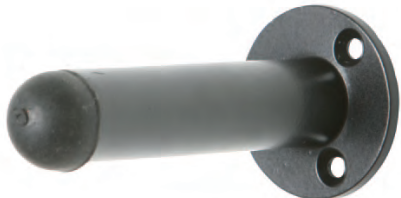
A



3045

SB P

A



5136

SB P

A



Cylinder 6000



1977

AB P

A



1855



1976

AB P

A



777



1979

AB P

A B

1504
Escutcheon – 50 x 38mm (2” x 1 1/2”)

3011
Escutcheon – 44 x 32mm (1 3/4” x 1 1/4”)

3045
Escutcheon – 50mm (2”)

3012
Steel escutcheon – 48mm (1 7/8”)

1401
Escutcheon with Euro profile
50 x 50mm (2” x 2”)

5136
Door stop – 89mm (3 1/2”)

1493
Escutcheon – 73 x 25mm (2 7/8” x 1”)

1400
Escutcheon with Euro profile
70 x 50mm (2 3/4” x 2”)

Cylinder 6000
Black double cylinder or thumb turn and
single cylinder. Keyed alike, keyed to differ or
master keyed. Odd sizes available in multiples
of 5mm. Please ask for details.

1977
House numerals and letters – 50mm (2”)

1976
House numerals and letters – 45mm (1 3/4”)

1979
House numerals and letters
50mm (2”), 76mm (3”) 101mm (4”), 152mm (6”)

1855
Old English style name plates. Gold on black.
This is an approximate guide as capitals are larger than lower case letters and
spaces must be allowed for between words. Our pattern shop will make your
individual plate on the most appropriate size for the best results. For longer names
it may be better to use two plates alongside each other or one above the other.

777
Also available in gold on black. Supplied with chain (not shown)
368 x 73mm (14 1/2” x 2 7/8”)

DOOR AND GATE FURNITURE

DOOR ACCESSORIES



770

AB

P

A



2156

AB

P

A



769

AB

P

A

B

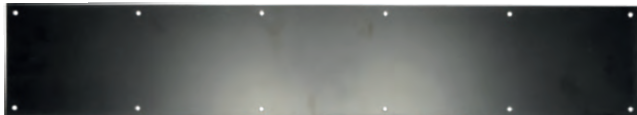


768

AB

P

A



4146

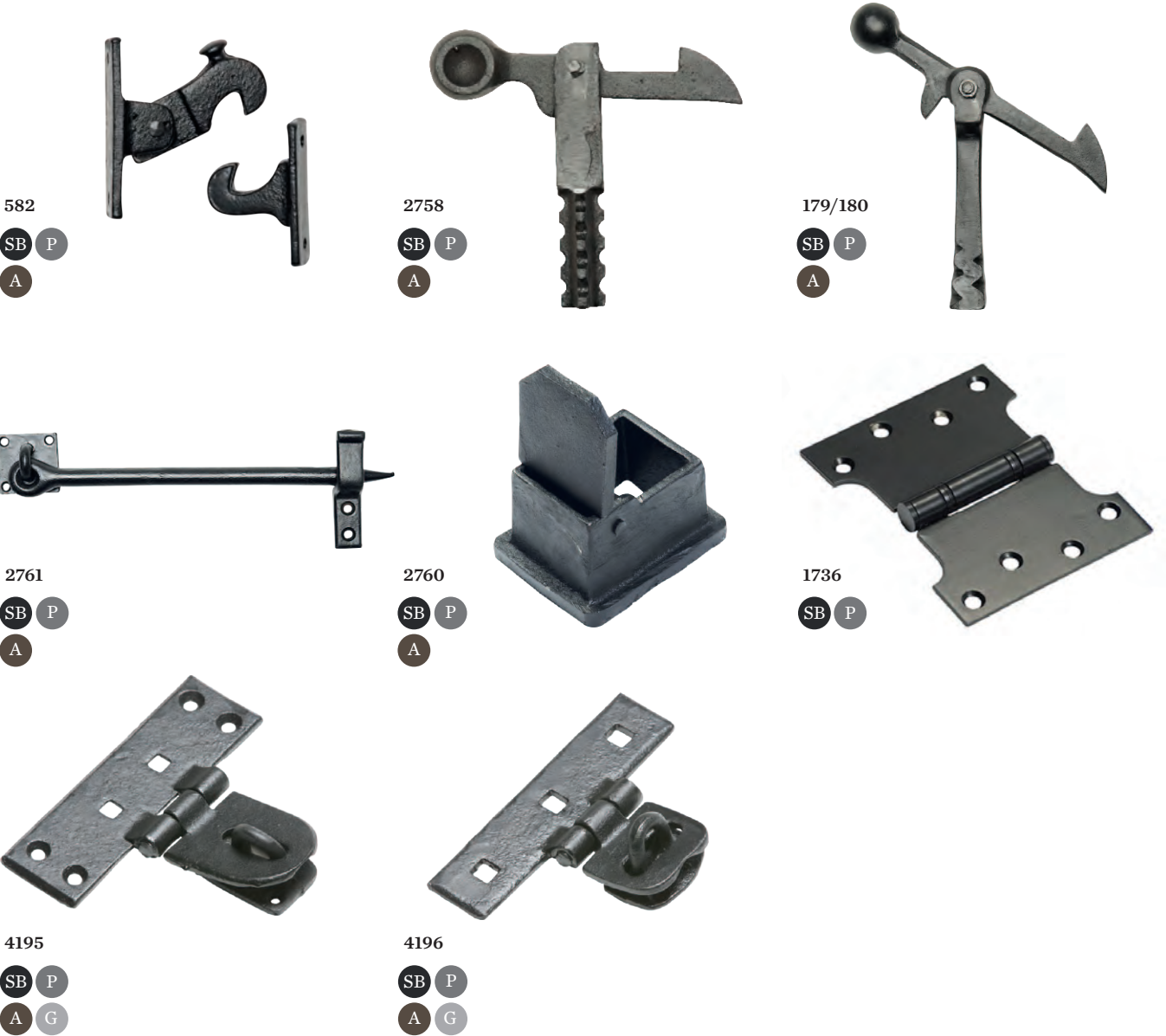
AB

P

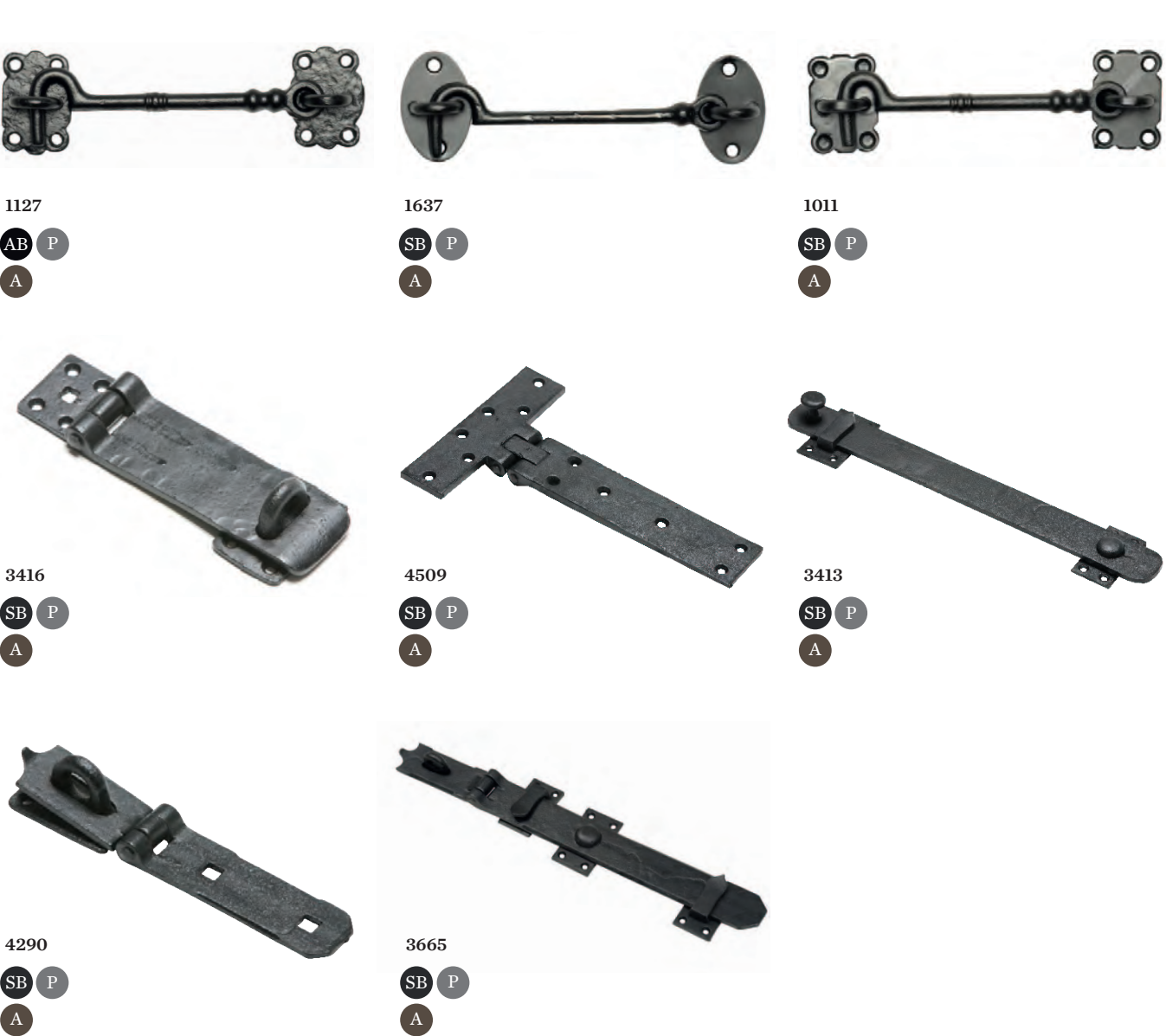
A

770 Door finger plate 304 x 57mm (12" x 2 1/4")	2156 Door finger plate 339 x 73mm (13 3/8" x 2 7/8")	769 Door finger plate 304 x 63mm (12" x 2 1/2")	768 Door finger plate 222 x 73mm (8 3/4" x 2 7/8")
4146 Door kicking plate Plain pattern manufactured from steel not iron Various sizes available			

GATE FITTINGS
GATE STOPS, CATCHES, LOCKING BARS/
HASP AND STAPLES



582 Automatic door catch 76mm (3") 2761 Gate catch 317mm (12 1/2") 4195 Hasp and staple 152 x 127 x 57mm (6" x 5" x 2 1/4") Also available in a galvanised finish	2758 Gate stop Length – 210mm (8 1/4") Height – 178mm (7") 2760 Gate stop Length – 121mm (4 3/4") Width – 95mm (3 3/4") Height – 76mm (3") Opening – 64 x 50mm (2 1/2" x 2") 4196 Hasp and staple 127 x 83 x 29mm (5" x 3 1/4" x 1 1/8") Also available in a galvanised finish	179/180 Gate stop with cement fixing (as shown – 179) Gate stop with floor plate fixing (180) Length – 330mm (13") Height – 254mm (10") 1736 Stainless steel parliament hinge 102 x 102mm (4" x 4") 127 x 102mm (5" x 4") 152 x 102mm (6" x 4")
---	--	--

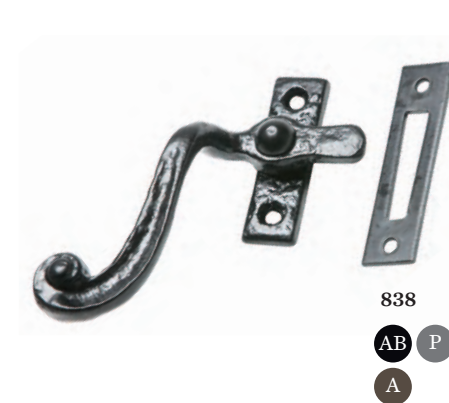


1127 101mm (4"), 127mm (5"), 152mm (6") 3416 Safety hasp & staple Closed – 101 x 50mm (4 x 2") or 152 x 50mm (6 x 2") 4290 152 x 38mm (6" x 1 1/2") 203 x 38mm (8" x 1 1/2") 254 x 41mm (10" x 1 5/8") 305 x 44mm (12" x 1 3/4") 356 x 48mm (14" x 1 7/8") 406 x 51mm (16" x 2") 457 x 60mm (18" x 2 3/8") 508 x 60mm (20" x 2 3/8")	1637 76mm (3"), 101mm (4"), 152mm (6"), 203mm (8"), 254mm (10"), 305mm (12"), 356mm (14"), 406mm (16"), 457mm (18") 4509 Trap door hinge 330 x 203mm (13" x 8") or 381 x 203mm (15 3/4" x 8") 3665 610 x 64mm (24" x 2 1/2") 762 x 64mm (30" x 2 1/2") 915 x 64mm (36" x 2 1/2")	1011 76mm (3"), 101mm (4"), 152mm (6"), 203mm (8"), 254mm (10"), 305mm (12"), 356mm (14"), 406mm (16"), 457mm (18") 3413 152 x 38mm (6" x 1 1/2") 203 x 38mm (8" x 1 1/2") 54 x 38mm (10" x 1 1/2") 305 x 38mm (12" x 1 1/2") 381 x 38mm (15" x 1 1/2") 457 x 38mm (18" x 1 1/2")
---	--	---



Casement fastener 1185 and
casement stay 1183 in Antique Black

WINDOW FURNITURE CASEMENT FASTENERS



1028
Hook & mortice – 95 x 67mm (3 3/4" x 2 3/4")

1121
Hook & mortice. Reversible
Matches 857 casement stay
Backplate – 60 x 21mm (2 3/8" x 7/8")

906
Hook & mortice. Reversible
Backplate – 60 x 21mm (2 3/8" x 7/8")

1027
Hook & mortice – 152 x 114mm (6" x 4")

1121W
Wedge fastener
Available as left or right handed
Matches 857 casement stay
57 x 17mm (2 1/4" x 5/8")

838
Hook & mortice
Available as left or right handed
Backplate – 65 x 21mm (2 1/2" x 7/8")

1182
Hook & mortice. Reversible
Matches 1184 casement stay
Backplate – 60 x 21mm (2 3/8" x 7/8")

1166
Lockable
Available as left or right handed
Matches 857 casement stay
57 x 17mm (2 1/4" x 5/8")

1185
Hook & mortice. Reversible
Matches 1078 casement stay
Backplate – 65 x 21mm (2 1/2" x 7/8")

See glossary (p106) to understand the
difference between hook and mortice plates

WINDOW FURNITURE

CASEMENT FASTENERS



- 1177**
Hook & mortice. Reversible
Backplate – 60 x 21mm (2 3/8” x 7/8”)

1165
Lockable. Left or right handed
Matches 1180 casement stay
57 x 18mm (2 1/4” x 3/4”)

1181
Hook & mortice. Reversible
Matches 1180 casement stay
Backplate – 60 x 21mm (2 3/8” x 7/8”)
- 1171**
Lockable espagnolette fixing. Narrow backplate suitable for UPvC windows
Matches 1180 casement stay
Left or right handed
Backplate – 15 x 68mm (5/8” x 2 5/8”)

1167
Three point lockable. Left or right handed
Matches 1180 casement stay
Backplate – 58 x 25mm (2 1/4” x 1”)

1601
Hook & mortice. Left or right handed
Matches 1600 casement stay
Backplate – 20 x 58mm (3/4” x 2 1/4”)
- 1193**
Hook & mortice. Reversible
Backplate – 60 x 21mm (2 3/8” x 7/8”)

1170
Lockable. Left or right handed
Matches 1180 casement stay
Backplate – 70 x 21mm (2 3/4” x 7/8”)

1181NVL
Lockable night vent fastener.
Left or right handed
Matches 1180 casement stay
Backplate – 81 x 18mm (3 1/4” x 3/4”)
Non-locking version also available



Casement fastener 1181 and casement stay 1180 in Antique Black

WINDOW FURNITURE
CASEMENT FASTENERS



3365
SB P
A



2709
SB P
A



2723
AB P
A



140/141
SB P
A B



144/145
SB P
A B



146/147
SB P
A



1176
AB P
A



9168
SB P
A



1460
SB P
A



1557
AB P
A



1132
AB P
A

3365
Hook & mortice. Reversible
Backplate – 57 x 20mm (2 1/4" x 3/4")

140/141
Hook (141) & mortice (140)
Matches 171 casement stay
Backplate – 85 x 25mm (3 3/8" x 1")

1176
Raised tongue fastener suitable for fitting
to windows with draught excluder
Matches 1180 casement stay
60 x 22mm (2 3/8" x 7/8")

2709
Backplate – 55 x 15mm (2 1/8" x 5/8")

144/145
Hook (145) & mortice (144)
Matches 171 casement stay
Backplate – 55 x 25mm (2 1/8" x 1")

9168
Lockable espagnolette fixing. Narrow
backplate suitable for UPVC windows
Matches 1180 casement stay
Left or right handed
Backplate – 70 x 15mm (2 3/4" x 5/8")
Handle – 130mm (5")

2723
Locking catch
Backplate – 55 x 28mm (2 1/8" x 1 1/8")
Locking snib plate – 55 x 20mm (2 1/8" x 3/4")

146/147
Hook (147) & mortice (146). Lockable
Left or right handed available
Matches 171 casement stay
Backplate – 68 x 19mm (2 5/8" x 3/4")

1460 Sash window fastener
Plate – 70 x 20mm (2 3/4" x 7/8")
Catchplate – 68 x 15mm (2 3/4" x 5/8")

1557 Window fastener
73 x 26mm (2 7/8" x 1")

1132 Window fastener
60 x 15mm (2 3/8" x 5/8")



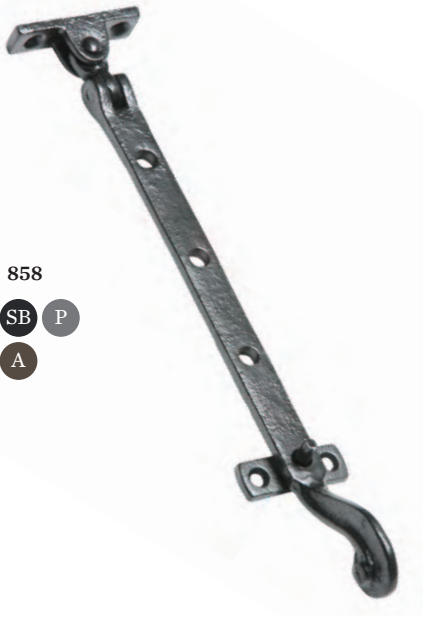
WINDOW FURNITURE
CASEMENT STAYS



1183
AB P
A



857
AB P
A B



858
SB P
A



905
AB P
A



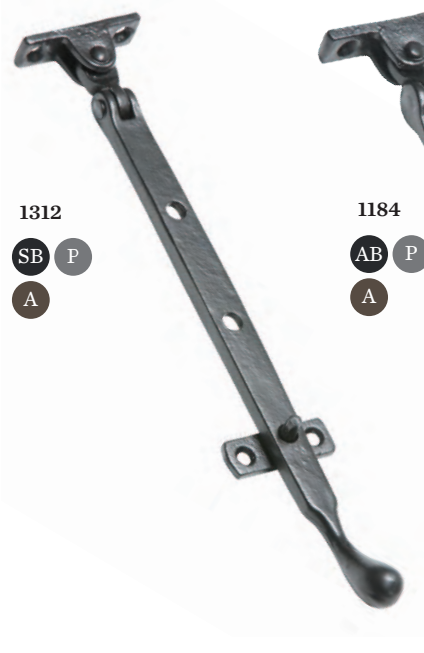
1180
AB P
A B



171
SB P
A B



Casement stay 1180 in Brass



1312
SB P
A



1184
AB P
A



504
SB P
A



1600
SB P
A

1183
203mm (8"), 254mm (10"), 304mm (12")
905
254mm (10") or 304mm (12")

857
Matches 1121 fastener
191mm (7"), 228mm (9"),
279mm (11"), 330mm (13")
1180
Matches 1181 fastener
203mm (8"), 254mm (10"), 304mm (12")

858
279mm (11") or 330mm (13")
171
152mm (6"), 203mm (8"),
254mm (10"), 305mm (12")

1312
203mm (8"), 254mm (10"),
305mm (12")

1184
Matches 1182 fastener
203mm (8"), 254mm (10"),
304mm (12")

504
254mm (10")

1600
Matches 1601 fastener
304mm (12")

WINDOW FURNITURE
CASEMENT STAYS



- 1752**
Skylight stay
254mm (10”), 305mm (12”)
381mm (15”), 457mm (18”)
533mm (21”), 610mm (24”)
686mm (27”), 762mm (30”)
915mm (36”), 1066mm (42”)
1220mm (48”)
4120
Roller arm for fanlight
152mm (6”) or 203mm (8”)
1078
279mm (11”) or 330mm (13”)
883
Shutter flap. Reversible
Spike – 178mm (7”)
1298
152mm (6”), 203mm (8”),
254mm (10”), 305mm (12”)
381mm (15”)
3900
178mm (7”) or 216mm (8”)
1126
Screw down
254mm (10”), 304mm (12”),
381mm (15”)
3754
Fanlight catch. Flush or recessed
127mm (5”) or 178mm (7”)
3998
Rule jointed stay
Open – 254mm (10”) or 305mm (12”)
607/607A
Spring fanlight catch with
gun metal shoots
32 x 44mm (1 1/4” x 1 3/4”)
672
Shutter fastener – 133 x 50mm (5 1/4” x 2”)
Spike – 108mm (4 1/4”)
116
Locking pivot
5182
Window restrictor
White (5182)
Dark brown (5180)
Light brown (5181)
3475
Shutter flap – 152 x 50mm (6” x 2”)
Spike – 108mm (4 1/4”)
117
Side fixing pivot
5145
Rack bolt key
5146
Window rack bolt



- 3754**
Fanlight catch. Flush or recessed
127mm (5”) or 178mm (7”)
3998
Rule jointed stay
Open – 254mm (10”) or 305mm (12”)
607/607A
Spring fanlight catch with
gun metal shoots
32 x 44mm (1 1/4” x 1 3/4”)
672
Shutter fastener – 133 x 50mm (5 1/4” x 2”)
Spike – 108mm (4 1/4”)
116
Locking pivot
5182
Window restrictor
White (5182)
Dark brown (5180)
Light brown (5181)
3475
Shutter flap – 152 x 50mm (6” x 2”)
Spike – 108mm (4 1/4”)
117
Side fixing pivot
5145
Rack bolt key
5146
Window rack bolt

CABINET AND DRAWER FURNITURE HANDLES



997

AB P
A



1528

AB P
A



1217

AB P
A



1013

AB P
A



1192

AB P
A



985

AB P
A



1137

AB P
A



1543

AB P
A



834

AB P
A



932

AB P
A

997
Drawer handle
55 x 45mm (2 1/5" x 1 4/5")

1013
Drawer handle
Diameter - 35mm (1 2/5")

1137
Turn button - 62mm (2 1/2")

1543
Drawer handle
Diameter - 42mm (1 5/8")

1528
Drawer handle
80 x 35mm (3 1/7" x 1 2/5")

1192
Drawer handle
40 x 40mm (1 4/7" x 1 4/7")

834
Drawer pull
Plate - 171 x 70mm (6 3/4" x 2 3/4")
Handle - 127mm (5")

1217
Drawer handle
Diameter - 35mm (1 2/5")

985
Drawer handle
80 x 35mm (3 1/7" x 1 2/5")

932
Hasp and staple
148 x 77mm (5 7/8" x 3")

Handle 834 and hasp & staple 932
in Antique Black



CABINET AND DRAWER FURNITURE KNOBS AND PULLS



1195

AB P
A



1949

SB P
A



1119

SB P
A



1135

AB P
A



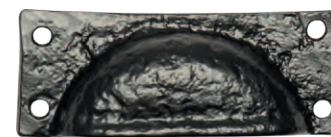
2587

AB P
A



2586

AB P
A



1549

AB P
A



1194

AB P
A



3960

AB P
A

1195
Cupboard knob
Bolt or screw – 35mm (1 3/8")
Rose – 38mm (1 1/2")

1135
Cupboard knob
Screw – 25mm (1")

1549
Drawer pull – 89mm (3 1/2")

1949
Cupboard knob
Diameter – 25mm (1")
2587
Sash pull – 63mm (2 1/2")
1194
Drawer pull
Knob – 114 x 50mm (4 1/2" x 2")

1119
Turn button – 62mm (2 1/2")
2586
Sash pull
79 x 31mm (3 1/8" x 1 1/4")
Projection – 31mm (1 1/4")
3960
Drawer pull – 108mm (4 1/4")

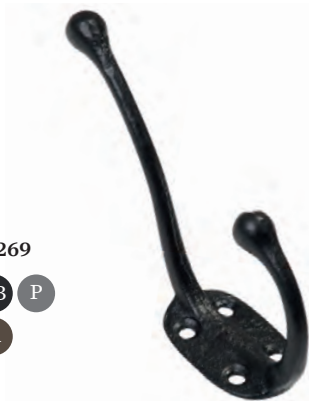
HOME ACCESSORIES
HOOKS AND BRACKETS



734
AB P
A



837
AB P
A



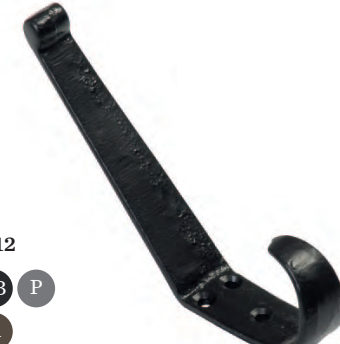
4269
SB P
A



1129
AB P
A B



4463
AB P
A



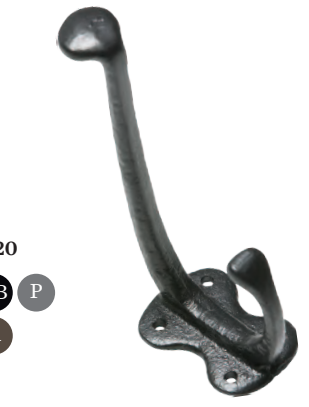
212
SB P
A



1130
AB P
A B



745
AB P
A



720
AB P
A

734

Hat and coat hook
101mm (4")
1129
Coat hook
Backplate – 40 x 40mm (1 1/2" x 1 1/2")
Projection – 65mm (2 1/2")

1130

Hat and coat hook
152mm (6")

837

Hat and coat hook
127mm (5")
4463
Fleur-de-lys hook
Backplate – 54 x 54mm (2" x 2")
Projection – 70mm (2 3/4")

745

Hat and coat hook
152mm (5 1/4")

4269

Hat and coat hook
140 x 76mm (5 1/2 x 3")
212
Hat and coat hook
152mm (6")

720

Hat and coat hook
152mm (6")

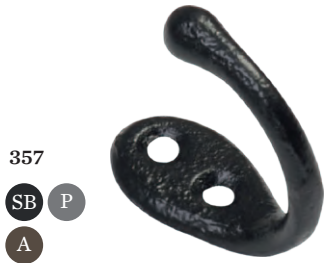


Hat and coat hook 1130 in Antique Black

HOME ACCESSORIES
HOOKS AND BRACKETS



2378
SB P
A



357
SB P
A



1173
AB P
A B



836
AB P
A



1174
AB P
A B



1238
AB P
A



3491
SB P
A



3498
SB P
A



3499
SB P
A

2378
Hat and coat hook
146 x 76mm (5 3/4" x 3")

836
Coat hook
Backplate – 50 x 50mm (2" x 2")
Projection – 70mm (2 3/4")

3491
Handrail bracket
50mm (2"), 64mm (2 1/2"), 76mm (3")

357
Coat hook – 50 x 24mm (2" x 1")
Projection – 50mm (2")

1174
Coat hook – 80 x 50mm (3 1/8" x 2")
Projection – 35mm (1 3/8")

3498
Handrail bracket
50mm (2"), 64mm (2 1/2"), 76mm (3")

1173
Coat hook – 50 x 24mm (2" x 1")
Projection – 50mm (2")

1238
Picture hook – 45mm (1 3/4")
Projection – 20mm (3/4")

3499
Extra strong handrail bracket
64mm (2 1/2") or 83mm (3 1/4")



Hat and coat hook 1130 & cupboard knob 1195 both in Antique Black



3497
AB P
A



5130
AB P
A



5131
AB P
A

3497
Handrail bracket
Projection – 50mm (2")

5130
Clothes rack/airer
Length – 1,524 mm (60")
Brackets – 349mm (13 3/4")

5131
Shelf unit
609mm (24"), 914mm (36"),
1219mm (48"), 1524mm (60")

HOME ACCESSORIES
LIGHTING



401/400
SB P
A



406
SB P
A



403
SB P
A



407
SB P
A



405
SB P
A

401
Hanging wall lantern with hexagonal cage
552 x 15mm (21 3/4" x 5/8")
Plate – 254 x 50mm (10" x 2")
Canopy – 190mm (7 1/2")
403
Hanging wall lantern
Supplied with wall bracket and ceiling rose or corner bracket
Plate – 260 x 44mm (10 1/4" x 1 3/4")
Frame – 203 x 114mm (8" x 4 1/2")

400
Hanging wall lantern with square cage
177 x 177mm (7" x 7"),
Plate – 254 x 50mm (10" x 2")
Canopy – 228 x 228mm (9" x 9")
407
Hanging wall lantern with hexagonal cage
Plate – 339 x 73mm (13" x 2 7/8")
Projection – 200mm (8")
Cage – 175 x 150mm (7" x 6")

406
Wall light
Bracket only supplied, not wired
Candle drips, bulbs or shades not included
Twin – 263 x 276mm (10 3/8" x 10 7/8")
Single – 263 x 148mm (10 7/8" x 5 3/4")
405
Hanging wall lantern
Supplied with wall bracket & ceiling rose or corner bracket
Frame – 203 x 114mm (8" x 4 1/2")
Height – 304mm (12")

HOME ACCESSORIES
PATIO AND FIRESIDE



813
AB P
A



3612
AB P
A



3600
SB P
A



4601
AB P
A



4342
SB P
A



4539
SB P
A



2842
SB P
A



3023
AB P
A



4185
AB P
A

813
Wall bracket
101 x 76mm (4" x 3")
152 x 127mm (6" x 5")
222 x 173mm (9" x 7")
4601
Basket hook
Projection – 228mm (9"),
304mm (12"), 381mm (15")
2842
Fork, broom & shovel holder
Projection – 76mm (3")
Plate – 114 x 51mm (4 1/2" x 2")

3612
Flower pot holder
260 x 190mm (10 1/4" x 7 1/2")
4342
Boot scraper
Height – 356mm (14")
Width – 196mm (7 3/4")
3023
Coal tongs
277mm (11 1/2")

3600
Basket hook
152mm (6"), 203mm (8"),
254mm (10"), 305mm (12")
4539
Boot scraper
Width – 356mm (14")
Depth – 330mm (13")
4185
Fire poker
457mm (18")



BLACKSMITH FORGE RANGE

- 84 Door furniture
- 88 Window furniture
- 90 Hooks and handles

The traditional handcrafted nature of our production process means that all listed sizes are approximate.



BLACKSMITH FORGE RANGE
DOOR FURNITURE

6058

SB A



6080

SB A



6050/6051

SB A



6052/6053

SB A



6058

Ring knocker
Backplate – 115mm (4 1/2")
Ring – 110mm (4 3/8")

6050/6051

Lever handle
Sprung (6050) – lock, latch or bathroom
Unsprung (6051) – lock, latch or Euro
270 x 38mm (10 3/4" x 1 1/2")

6080

Letter plate
Outside – 267 x 114mm (10 1/2" x 4 1/2")
Opening – 203 x 41mm (8" x 1 5/8")
Fixing bolt centres – 235mm (9 1/4")

6052/6053

Lever handle – sprung
Lock, latch or bathroom
240 x 40mm (9 3/8" x 1 5/8")



Bolt 6059 in Argent and
hinge 6057 in Smooth Black

BLACKSMITH FORGE RANGE

DOOR FURNITURE



- 6059**
Bolt – straight or cranked
102mm (4”), 152mm (6”)

6057
Door hinge
152mm (6”), 229mm (9”)
305mm (12”), 381mm (15”)
457mm (18”), 559mm (22”)
- 6068**
Bolt – straight or cranked
102mm (4”), 152mm (6”)

6056
Thumb latch
Handle – 126 x 47mm (5” x 1 7/8”)
Latch bar – 84mm (3 1/4”)
- 6082**
Door hinge
152mm (6”), 229mm (9”)
305mm (12”), 381mm (15”)
457mm (18”), 559mm (22”)

6081
Cylinder pull
Backplate – 85 x 50mm (3 3/8” x 2”)
Projection – 20mm (3/4”)

See glossary (p106) to understand the
difference between straight and cranked

BLACKSMITH FORGE RANGE

WINDOW FURNITURE



6069
SB A

6070
SB A



6062
SB A

6063
SB A

6069
Casement stay
203mm (8”), 254mm (10”), 305mm (12”)
6070
Casement stay
203mm (8”), 254mm (10”), 305mm (12”)

6062
Lockable casement fastener
Hook or mortice. Left or right handed
Fixing plate – 56 x 15mm (2 1/4” x 5/8”)
Handle length – 100mm (4”)
6063
Lockable casement fastener
Hook or mortice. Left or right handed
Fixing plate – 56 x 15mm (2 1/4” x 5/8”)
Handle length – 100mm (4”)



Casement fastener 6063, casement stay 6070
and casement stay 6069 all in Smooth Black

BLACKSMITH FORGE RANGE
HOOKS AND HANDLES



6064
SB A



6065
SB A



6060
SB A



6061
SB A



6067
SB A



6066
SB A

6064

Coat hook
Plate – 50 x 38mm
(2" x 1 1/2")
Projection – 54mm (2 1/8")

6067

Hat and coat hook
Plate – 80mm x 20mm
(3 1/8" x 3/4")
Projection – 60mm (2 3/8")

6065

Coat hook
Plate – 72 x 54mm
(2 3/4" x 2 1/8")
Projection – 58mm (2 1/4")

6066

Coat hook
Plate – 80 x 20mm
(3 1/8" x 3/4")
Projection – 45mm (1 3/4")

6060

Pull handle
102mm (4"), 152mm (6"),
203mm (8")

6061

Pull handle
102mm (4"), 152mm (6"),
203mm (8")



Hooks 6065 in Smooth Black
and handles 6061 in Argent

CAST BRASS RANGE

- 93 Door furniture
- 99 Window furniture
- 100 Hooks, handles and locks

The traditional handcrafted nature of our production process means that all listed sizes are approximate.



CAST BRASS RANGE DOOR FURNITURE



B4896



B2621



B1073



B1083



B1102

B4896
Lions head door knocker
114 x 95mm (4 1/2" x 3 3/4")
Ring – 101mm (4")

B1073
Letter plate
Outside – 362 x 88mm (14 1/4" x 3 1/2")
Opening – 203 x 44mm (8" x 1 3/4")
Fixing bolt centres – 277mm (10 3/4")

B1102
Letter plate
Internal flap – 292 x 76mm (11 1/2" x 3")

B2621
Bat bedroom door knocker
76 x 89mm (3" x 3 1/2")

B1083
Letter plate
Outside – 266 x 108mm (10 1/2" x 4 1/2")
Opening – 203 x 44mm (8" x 1 3/4")
Fixing bolt centres – 241mm (9 1/4")

CAST BRASS RANGE
DOOR FURNITURE



B2439



B2439SP



B2450



B2454



B2451



B2561

B2439
Lever handle
Lock, latch or bathroom
152 x 38mm (6" x 1 1/2")
Short latch only – 101 x 38mm (4" x 1 1/2")
B2454
Lever handle
Lock, latch or bathroom
Plate – 164 x 47mm (6 1/2" x 1 7/8")

B2439SP
Lever handle
Short plate, latch only
Plate 101 x 38mm (4" x 1 1/2")
B2451
Lever handle
Lock, latch or bathroom
Plate – 164 x 47mm (6 1/2" x 1 7/8")

B2450
Lever handle
Lock, latch or bathroom
Plate – 190 x 55mm (7 1/2" x 2 1/4")
B2561
Lever handle
Lock – 140 x 38mm (5 1/2" x 1 1/2")
Latch – 114 x 38mm (4 1/2" x 1 1/2")



Casement stay B1180 in Cast Brass



B3603



B564



B769



B2156

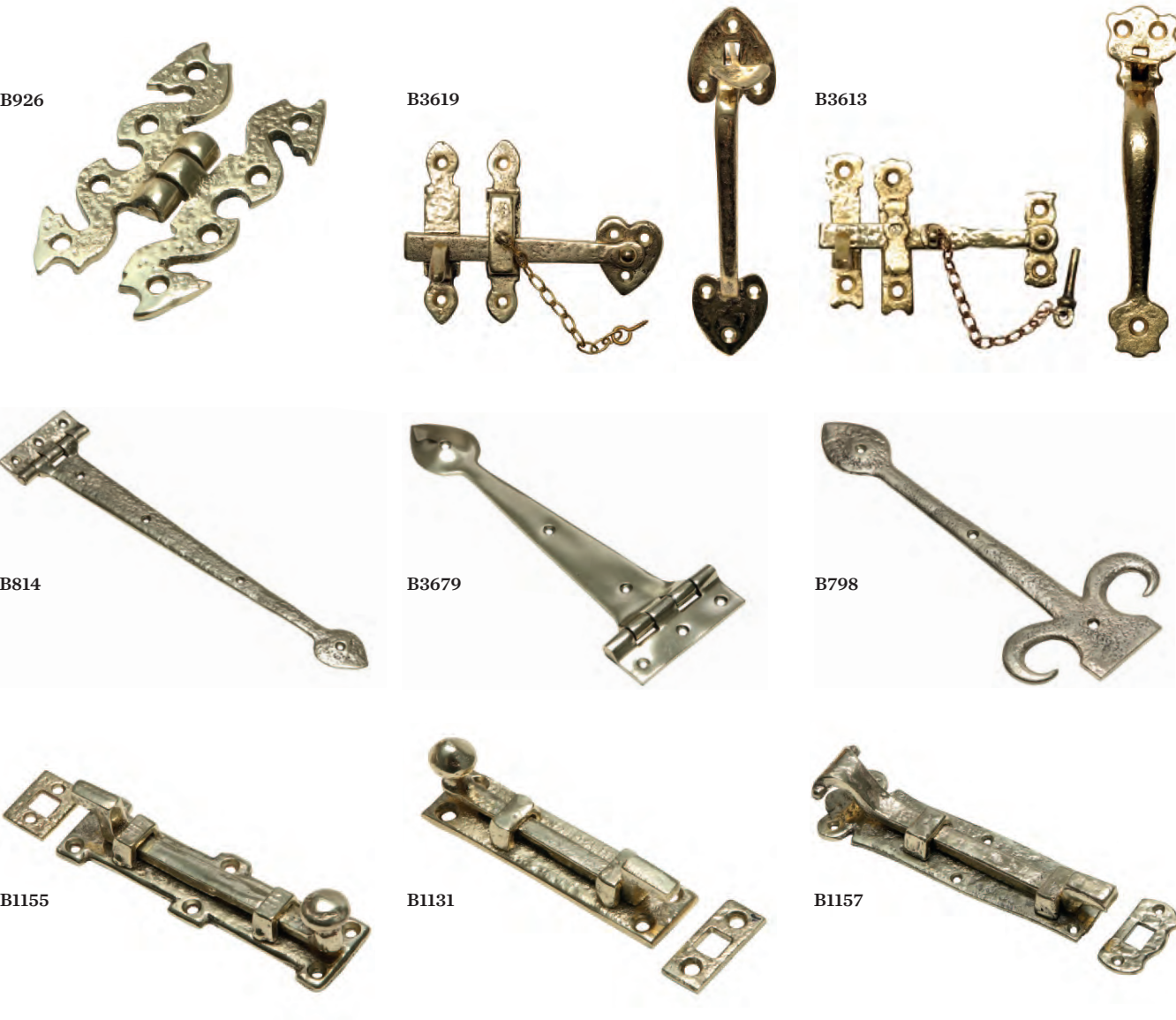
B3603
Pull handle
191 x 64mm (7 1/2" x 2 1/2")

B564
Pull handle
101mm (4"), 127mm (5"),
152mm (6"), 177mm (7"),
228mm (9")

B769
Door finger plate
304 x 63mm (12" x 2 1/2")

B2156
Door finger plate
339 x 73mm (13 3/8" x 2 7/8")

CAST BRASS RANGE
DOOR FURNITURE



- B926**
Hinge – suitable for cabinet doors
83 x 45mm (3 1/4" x 1 3/4")

B814
Hinge
152 x 63mm (6" x 2 1/2")
263 x 101mm (10 1/2" x 4")
313 x 101mm (12" x 4")
388 x 101mm (15" x 4")
456 x 101mm (18" x 4")

B1155
Straight or cranked
Plate – 152 x 45mm (6" x 1 3/4")
or 203 x 54mm (8" x 2 1/8")

Straight only
Plate – 254 x 54mm (10" x 2 1/8")
or 304 x 54mm (12" x 2 1/8")
- B3619**
Thumb latch
Handle – 203 x 63mm (8" x 2 1/2")
Latch – 127mm (5")

B3679
Hinge – 304 x 108mm (12" x 4.25")
or 381 x 108mm (15" x 4.25")

B1131
Straight or cranked
Plate – 101 x 25mm (4" x 1")
- B3613**
Thumb latch handle
228 x 63mm (7 3/4" x 2 1/2")
Latch – 197mm (7 3/4")

B798
Hinge – 304 x 139mm (12" x 5 1/2")

B1157
Straight or cranked
Plate – 114 x 38mm (4 1/2" x 1 1/2")
Bolt – 127mm (5")
Plate – 190 x 57mm (7 1/2" x 2 1/4")
Bolt – 203mm (8")

Straight only
Plate – 241 x 57mm (9 1/2" x 2 1/4")
Bolt – 254mm (10")
Plate – 292 x 57mm (11 1/2" x 2 1/4")
Bolt – 304mm (12")

See glossary (p106) to understand the
difference between straight and cranked



- B1205**
Door knob
Mortice or rim
Knob – 50mm (2")
Plate – 85mm (3 3/8")

B3056
Door knob
Mortice or rim
Knob – 57mm (2 1/4")
Plate – 63mm (2 1/2")

B1081
Door stud.
Drive or screw
Head – 19mm (3/4")
- B1550**
Door knob
Mortice or rim
Knob – 63 x 39mm (2 1/2" x 1 1/2")
Plate – 57mm (2 1/4")

B3064
Centre door knob
Knob – 70mm (2 3/4")
Plate – 76mm (3")

B153
Door stud. Screw
Head – 22mm (7/8")
- B1551**
Door knob
Mortice or rim
Knob – 63 x 38mm (2 1/2" x 1 1/2")
Plate – 67 x 50mm (2 5/8" x 2")

B1195
Cupboard knob
35mm (1 3/8")
Rose – 38mm (1 1/2")

B1979
Letters and numerals
76mm (3")

See glossary (p106) to understand the
difference between mortice and rim

CAST BRASS RANGE
DOOR FURNITURE

B1402



B1401



B1065



B1485



B1486



B1150



B1761



B1493



B1502



B1402

Escutcheon
51 x 51mm (2" x 2")

B1485

Cylinder latch pull
85 x 50mm (3 1/2" x 2")

B1761

Bell push
121 x 32mm (4 3/4" x 1 1/4")

B1401

Escutcheon
51 x 51mm (2" x 2")

B1486

Cylinder latch cover/pull
127 x 58mm (5" x 2 1/2")

B1493

Escutcheon
73 x 25mm (2 7/8" x 1")

B1065

Escutcheon
54 x 25mm (2 1/8" x 1")

B1150

Privacy bolt with vacant/engaged sign
Latch – 64 x 25mm (2 1/2" x 1")
Catch – 64 x 20mm (2 1/2" x 3/4")
Disc – 70 x 70mm (2 3/4" x 2 3/4")

B1502

Escutcheon
45 x 30mm (1 3/4" x 1 1/8")

CAST BRASS RANGE
WINDOW FURNITURE

B140/
B141



B144/
B145



B1165



B1181



B1166



B1121



B1180



B171



B857



B140/B141

Casement fastener
Hook (141) & mortice (140). Smooth finish
Matches 171 casement stay
Backplate – 85 x 25mm (3 3/8" x 1")

B1181

Casement fastener
Hook & mortice. Reversible
Matches 1180 casement stay
Backplate – 60 x 21mm (2 3/8" x 7/8")

B1180

Casement stay
203mm (8"), 254mm (10"), 304mm (12")

See glossary (p106) to understand the
difference between hook and mortice plates

B144/B145

Casement fastener
Hook (145) & mortice (144). Smooth finish
Matches 171 casement stay
Backplate – 55 x 25mm (2 1/8" x 1")

B1166

Casement fastener. Lockable.
Available as left or right handed.
Matches 857 casement stay
57 x 18mm (2 1/4" x 3/4")

B171

Casement stay. Smooth finish
152mm (6"), 203mm (8"),
254mm (10"), 305mm (12")

B1165

Casement fastener. Lockable.
Available as left or right handed.
Matches 1180 casement stay
57 x 18mm (2 1/4" x 3/4")

B1121

Casement fastener
Hook & mortice. Reversible
Matches 857 casement stay
Backplate – 60 x 21mm (2 3/8" x 7/8")

B857

Casement stay. Matches 1121 fastener
191mm (7"), 228mm (9"),
279mm (11"), 330mm (13")

CAST BRASS RANGE
HOOKS, HANDLES AND LOCKS

B1174



B1173



B1129



B406



B1204



B116



B1130



B4463



B632



B3754



B679



B916



B910



B1174

Coat hook – 80 x 50mm (3 1/8" x 2")
Projection – 35mm (1 3/8")

B1130

Hat and coat hook
152mm (6")

B679

Ring handle
Rose – 63mm (2 1/2")
Handle – 76mm (3")

B1173

Coat hook – 50 x 24mm (2" x 1")
Projection – 50mm (2")

B4463

Fleur-de-lys hook
Backplate – 54 x 54mm (2" x 2")
Projection – 70mm (2 3/4")

B916

Drawer handle
67 x 36mm (2 3/5" x 1 7/16")

B1129

Coat hook
Backplate – 40 x 40mm (1 1/2" x 1 1/2")
Projection – 65mm (2 1/2")

B632

Ring handle
Rose – 101mm (4")
Handle – 101mm (4")

B910

Drawer handle
50 x 25mm (2" x 1")

B406

Interior wall lamp
Double – 263 x 276mm (10 3/8" x 10 7/8")
Single – 263 x 148mm (10 7/8" x 5 3/4")

B3754

Fanlight catch
Smooth finish. Also in flush fitting.
127mm (5") or 178mm (7")

B1204

Rim lock set
Lock or latch. Supplied with 1550 knob,
oval escutcheon and Wilkes spindle.
Lock body – 125 x 103 x 19mm
(4 3/4" x 4" x 3/4")

B116

Locking pivot
For use with casement stay
Smooth finish

RAWNSLEY RANGE

The traditional handcrafted nature of our production process means that all listed sizes are approximate.

RAWNSLEY RANGE



T540



T541



WPE906



WPE911



T710



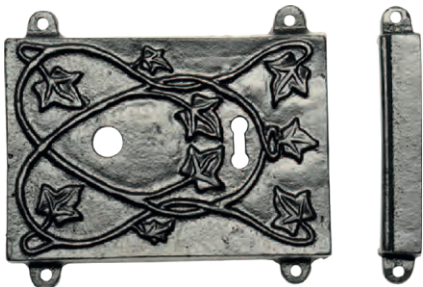
T940



T1102



RLC451C



T540

Letter plate
Width – 250mm (10")
Aperture – 183 x 25mm (7 1/4" x 1")

WPE906

Door knocker
Length – 228mm (9 1/2")

T940

Door knob
Mortice or rim
Knob – 63mm (2 1/2")

T541

Letter plate
Width – 205mm (8")
Aperture – 121 x 25mm (4 3/4" x 1")

WPE911

Door knocker
Length – 190mm (7 1/2")

T1102

Drawer pull
Width – 115mm (4 1/2")

T710

Door knocker
Length – 223mm (8")

RLC451C

Rimlock
With or without rimlock
Supplied with T940 knob and escutcheon
Lock body – 158 x 115mm (6 1/4" x 4 1/2")



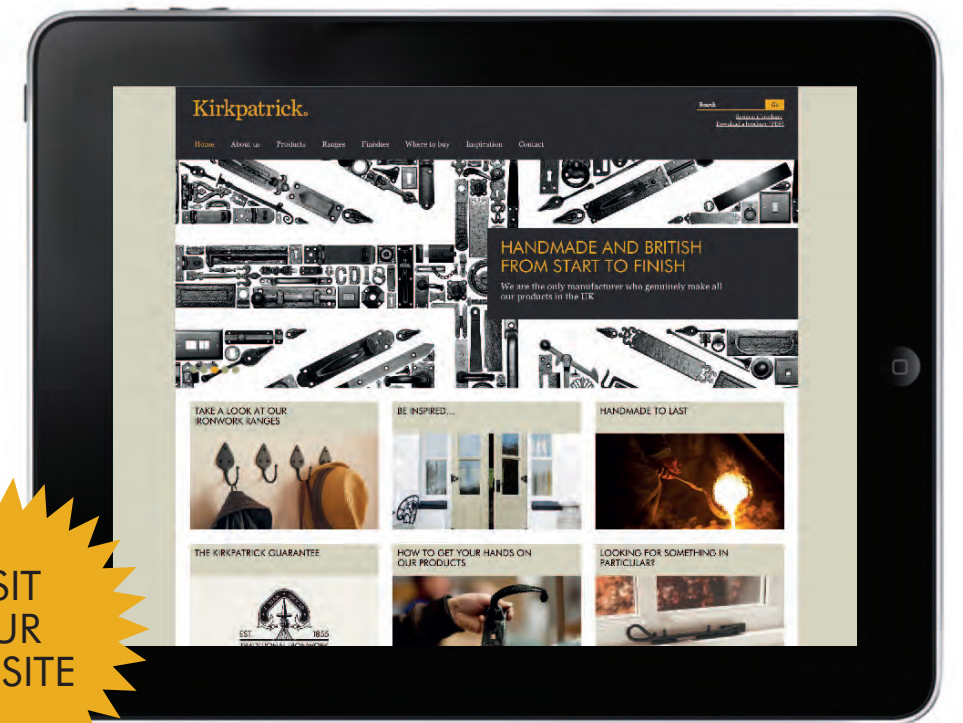
NEED INSPIRATION?

Have a peek at the
inspiration page on
our website for
more ideas...

GET YOUR HANDS ON OUR PRODUCTS

For a full up-to-date list of local,
UK and international stockists
please visit our website.

KIRKPATRICK.CO.UK



LEVER HANDLE LOCK TYPES

Lock
A traditional key operated locking system.

Latch
A handle operated, spring loaded tongue which ‘clicks’ shut, holding the door closed but not locking it.

Bathroom
A turn and release locking system which allows the door to be locked and unlocked from one side only for privacy without the use of a key.

Euro cylinder
A keyhole shaped lock barrel which fits into an appropriately shaped hole within the door and its handle.

Oval lock
Very similar to a euro cylinder but with an oval rather than keyhole shaped barrel.



Lock Latch



Euro cylinder

THUMB LATCH TYPES
CRANKED OR STRAIGHT?

Cranked
The handle is offset to one side slightly to accommodate for a left hand or right handed door. Sometimes the actual thumb lever can be off-set also.



Straight Cranked

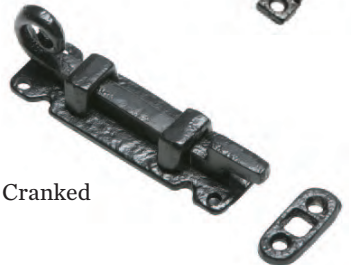
BOLT TYPES
CRANKED OR STRAIGHT?

Straight
The bolt sits on the same plane as the bolt fixing.

Cranked
A cranked bolt is angled out like a step to allow it to fix in position at a 90 degree angle to the actual bolt.



Straight



Cranked

DOOR KNOBS/LOCKS
MORTICE OR RIM?

Mortice
A mortice knob can be turned to operate a tongue latch within the door that slots into a mortice (hole) in the door frame, holding the door closed or releasing it.

Rim
A rim knob sits on top of a rim latch or rim lock box, which is mounted onto the face of the door. Turning the knob operates a tongue latch inside the box which slots into a keeper on the door frame, securing or releasing the door.



Rim

WINDOW FASTENINGS
HOOK OR MORTICE?

Hook
A hook fastening slots into a protruding hook attached to the window frame.

Mortice
A mortice fastening fits into a recess in the window frame.



Hook

Mortice

AND FINALLY...



BESPOKE ITEMS

With our many years’ experience of casting malleable iron we have the capability to make bespoke items to replace unique items which are no longer available.

This service is typically used when renovating listed buildings. To do this we would normally require a sample of the existing product so that we can produce a new pattern from which to make a casting.



REFURBISHING

Iron products are very durable and can last for many years. If a listed building is being renovated there is very often the option to re-use the original ironmongery.

However, although the actual product is still functional and strong it is often the case that it has been painted over several times and its original beauty has been lost.

We have the capability to restore such products to their original glory by using the skills and techniques built up over 160 years.



TAKING CARE

Metal in most forms is susceptible to corrosion. Depending upon their function our malleable iron products are subjected to either a one or two stage coating process followed by stove drying to form our durable and hard wearing traditional finish.

Over time the finish can be affected particularly where moving parts rub together. To protect your ironwork we recommend that any moving parts are lightly oiled prior to fitting. We also recommend wiping the products with a lightly oiled cloth from time to time to remove any harmful deposits and reapplying a small amount of oil to moving parts. This is particularly advisable if located near the coastline. We would recommend a three-in-one or WD-40 type lubricant.

If the protective coating is damaged or chipped in any way, a Hammerite type paint should be applied to maintain protection against corrosion.

By adopting this simple advice you can help ensure that your Kirkpatrick products will remain both functional and decorative and will last a lifetime.



PRODUCT INDEX

Product Code	Pg	Product Code	Pg	Product Code	Pg	Product Code	Pg	Product Code	Pg	Product Code	Pg	Product Code	Pg	Product Code	Pg
116	71	814F	22	1117	48	1239	48	1814	19	2758	60	4120	70	B116	100
117	71	816	20	1119	75	1246	29	1820	19	2760	60	4146	59	B140 / B141	99
140 / 141	66	817	23	1120	21	1248	28	1855	57	2761	60	4185	81	B144 / B145	99
144	66	819	22	1121	63	1249	29	1883	43	2788	42	4195	60	B153	97
145	66	820	22	1121W	63	1251	28	1911	31	2842	81	4196	60	B171	99
146 / 147	66	821	23	1124	25	1253	53	1949	75	2967	37	4269	76	B406	100
153	55	828	53	1125	42	1257	34	1963	32	2968	37	4290	61	B564	95
171	68	829	21	1126	70	1298	70	1976	57	3011	56	4305	27	B632	100
179	60	830	33	1127	61	1312	69	1977	57	3012	56	4320	26	B679	100
180	60	832	50	1129	76	1324	31	1979	57	3023	81	4321	34	B769	95
212	76	834	73	1130	76	1400	56	2105	43	3045	56	4342	81	B798	96
357	78	836	78	1131	33	1401	56	2155	41	3056	46	4438	29	B814	96
400 / 401	80	837	76	1132	66	1460	66	2156	59	3064	46	4463	76	B857	99
403	80	838	63	1135	75	1484	53	2157	41	3066	46	4509	61	B910	100
405	80	846	48	1137	73	1485	53	2164	41	3067	45	4539	81	B916	100
406	80	853	54	1145	25	1486	53	2167	41	3072	46	4601	81	B926	96
407	80	857	68	1146	29	1487	53	2172	41	3075	47	4748	54	B1065	98
491	28	858	68	1147	25	1488	53	2173	41	3258	29	4896	48	B1073	93
504	69	866	29	1149	33	1490	55	2175	55	3365	66	5130	79	B1081	97
564	42	867	29	1150	37	1493	56	2176	55	3370	46	5131	79	B1083	93
571	50	869	29	1154	34	1498	54	2378	78	3372	46	5132	38	B1102	93
574	48	879	12	1155	33	1502	55	2433	12	3413	61	5133	38	B1121	99
578	48	883	70	1156	33	1503	55	2434	12	3416	61	5135	37	B1129	100
582	60	896	48	1157	33	1504	56	2439	12	3431	28	5136	56	B1130	100
586	48	902	33	1158	37	1507	21	2440	12	3475	71	5141	21	B1131	96
607 / 607A	71	903	33	1159	20	1508	21	2442	14	3491	78	5142	38	B1150	98
619	21	905	68	1161	19	1509	21	2444	14	3497	79	5143	38	B1155	96
620	21	906	63	1165	64	1510	20	2445	12	3498	78	5144	38	B1157	96
621	19	907	26	1166	63	1511	22	2448	14	3499	78	5145	71	B1165	99
622	19	911	28	1167	64	1512	20	2449	14	3600	81	5146	71	B1166	99
632	28	925	22	1170	64	1513	20	2450	12	3603	41	5147	37	B1173	100
641	22	926	22	1171	64	1517	20	2451	14	3612	81	5170	34	B1174	100
645	20	927	22	1172	20	1528	73	2454	14	3613	26	5182	71	B1180	99
671	25	932	73	1173	78	1543	73	2456	15	3614	26	9168	66	B1181	99
672	71	937	42	1174	78	1546	34	2459	17	3618	25	Cylinder 6000	56	B1195	97
679	28	944	50	1176	66	1547	34	2460	17	3619	25	6050	85	B1204	100
688	25	962	31	1177	64	1549	75	2461	17	3620	26	6051	85	B1205	97
717	28	967	32	1180	68	1550	47	2462	17	3622	27	6052	85	B1401	98
720	76	977	23	1181	64	1551	47	2463	17	3623	26	6053	85	B1402	98
734	76	978	22	1181NVL	64	1553	47	2471	15	3624	25	6054	17	B1485	98
745	76	985	73	1182	63	1554	47	2488	14	3625	26	6056	87	B1486	98
751	54	997	73	1183	68	1557	66	2491	15	3628	26	6057	87	B1493	98
754	12	1005	50	1184	69	1558	21	2494	15	3630	25	6058	85	B1502	98
768	59	1011	61	1185	63	1563	12	2495	15	3651	42	6059	87	B1550	97
769	59	1013	73	1190	55	1578	42	2496	15	3652	42	6060	90	B1551	97
770	59	1027	63	1192	73	1579	42	2519	14	3665	61	6061	90	B1761	98
777	57	1028	63	1193	64	1600	69	2520	14	3679	19	6062	88	B1979	97
782	48	1053	53	1194	75	1601	64	2563	15	3754	71	6063	88	B2156	95
796	34	1065	55	1195	75	1637	61	2564	15	3900	70	6064	90	B2439	94
797	23	1069	45	1196	33	1681	27	2568	15	3960	75	6065	90	B2439SP	94
798	23	1073	31	1197	50	1684	26	2586	75	3979	29	6066	90	B2450	94
799	19	1078	70	1203	46	1736	60	2587	75	3981	28	6067	90	B2451	94
807	41	1081	55	1204	37	1752	69	2618	50	3998	71	6068	87	B2454	94
808	45	1083	31	1205	45	1753	54	2621	50	4013	43	6069	88	B2561	94
809	20	1085	31	1206	45	1756	54	2623	50	4064	46	6070	88	B2621	93
810	19	1089	45	1207	45	1759	54	2629	50	4085	46	6080	85	B3056	97
812	34	1100	32	1217	73	1761	54	2630	50	4088	29	6081	87	B3064	97
813	81	1102	32	1233	32	1778	53	2709	66	4090	34	6082	87	B3603	95
814	19	1103	32	1238	78	1783	53	2723	66	4091	37	7000-7014	38/39	B3613	96



KIRKPATRICK.CO.UK



KIRKPATRICK.CO.UK

Kirkpatrick, PO Box 17
Frederick Street, Walsall
WS2 9NF United Kingdom

Tel '44 (0)1922 620 026
Fax '44 (0)1922 722 525
Email enquiries@kirkpatrick.co.uk

*February 2016. We are constantly reviewing and updating
the range which may be subject to alteration without notice*

